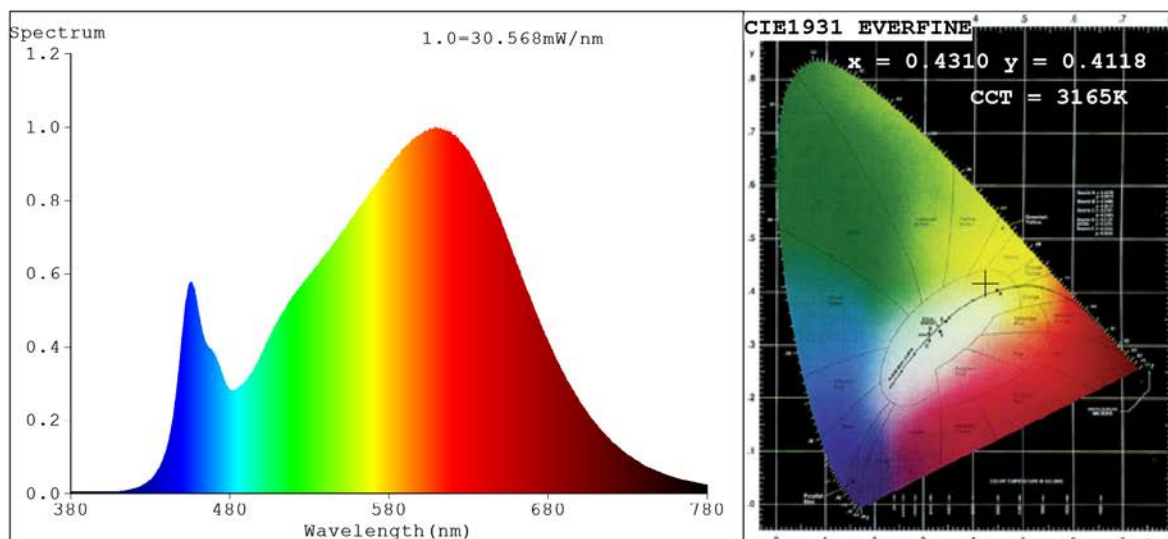


Spectrum Test Report



Color Parameters:

Chromaticity Coordinate: $x=0.4310$ $y=0.4118$ $u'=0.2435$ $v'=0.5235$
 CCT=3165K(Duv=0.0040) Dominant WL:Ld =580.8nm Purity=53.0%
 Ratio:R=22.3% G=74.7% B=3.0%;;Peak WL:Lp=608.8nm FWHM=157.5nm
 Render Index:Ra=87.4 CRI=82.6 TM30:Rf=86 Rg=94 Lav=591.9nm
 R1 =86 R2 =93 R3 =98 R4 =85 R5 =85 R6 =91 R7 =89
 R8 =72 R9 =36 R10=83 R11=83 R12=68 R13=88 R14=99 R15=81

Photo Parameters:

Flux = 1637 lm Eff. : 113.96 lm/W Fe = 5.232 W Scotopic:2352 S/P:1.4368

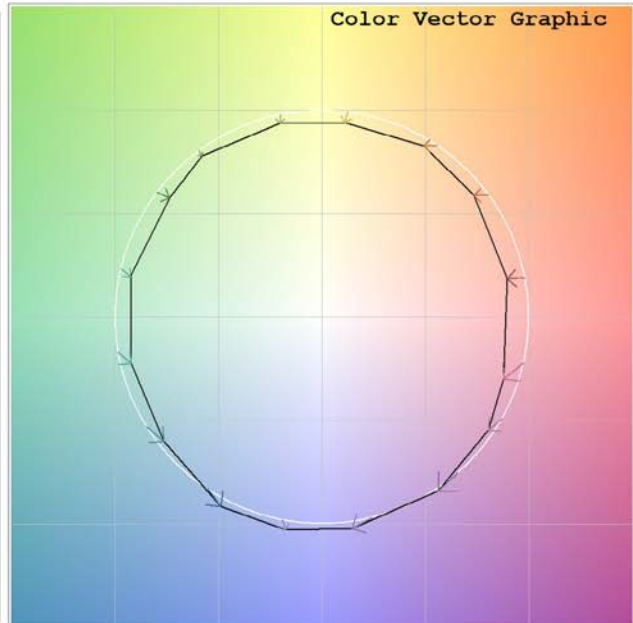
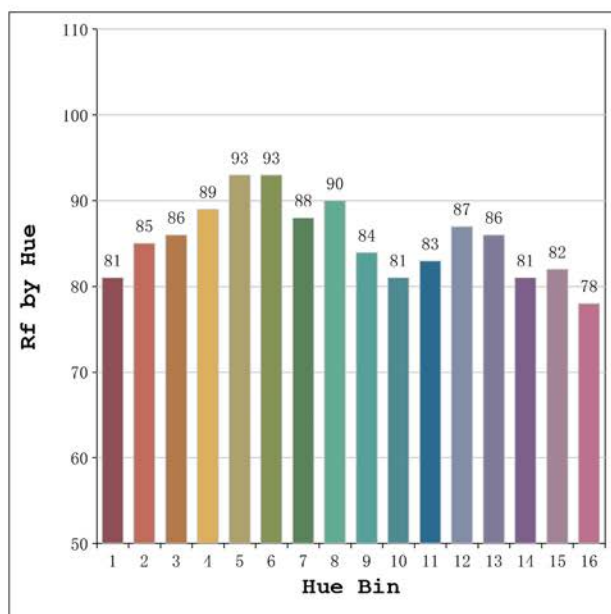
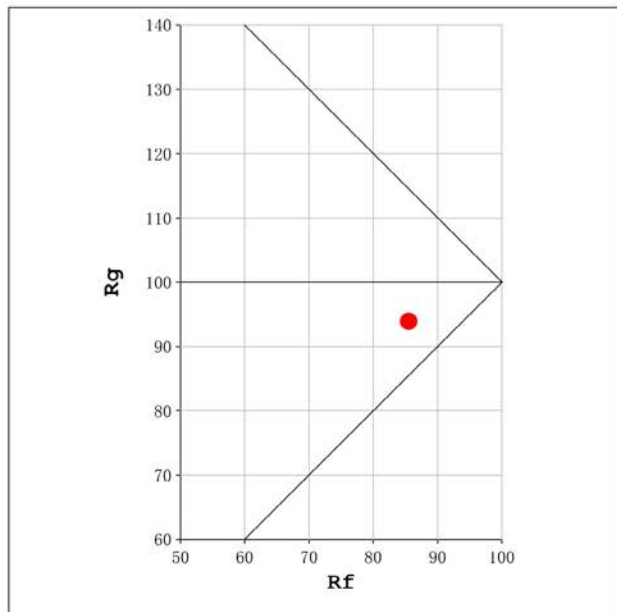
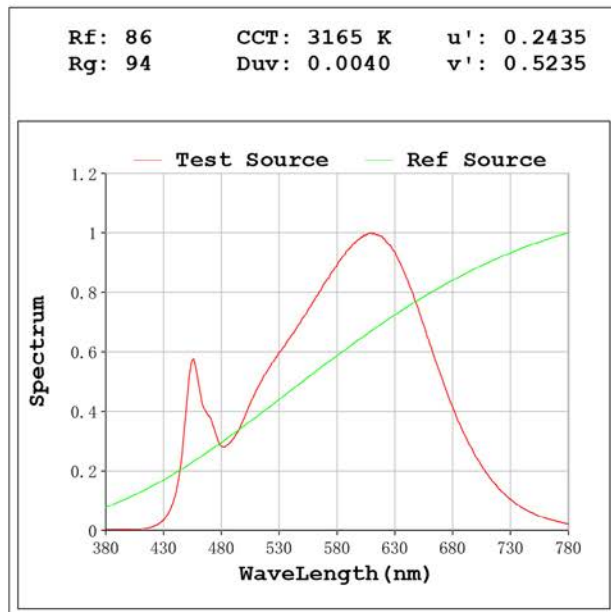
Electrical parameters:

V = 230.13 V I = 0.06880 A P = 14.37 W PF = 0.9072

Status: Integral T = 835 ms Ip = 43656 (67%)

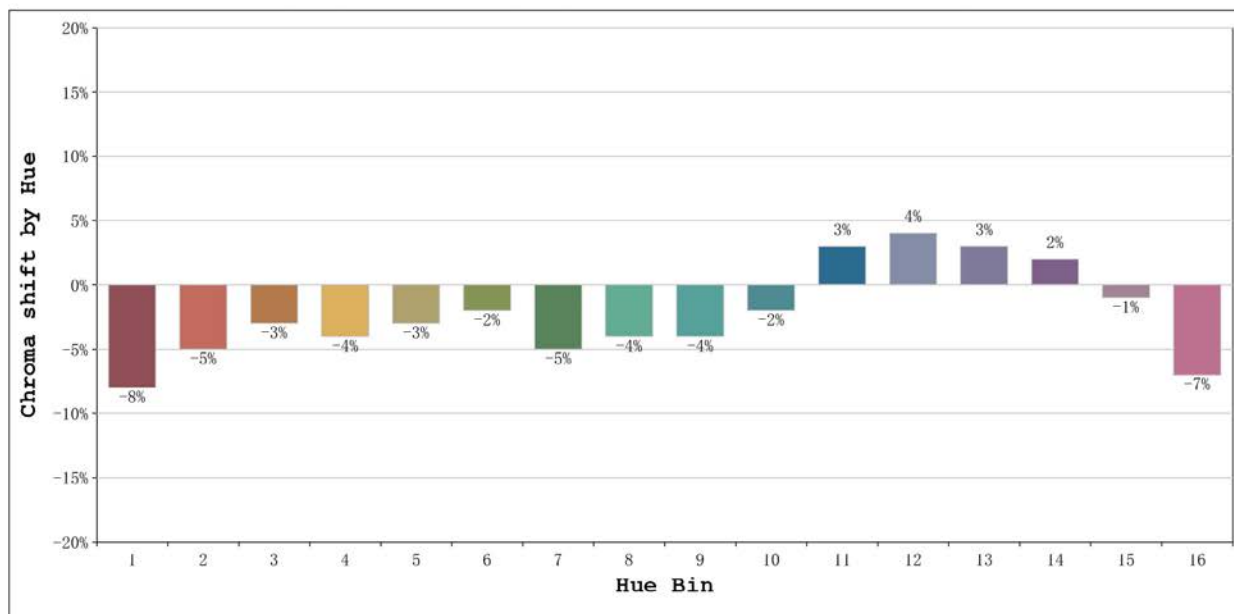
Model:Ecoled Infinity 3000K
 Tester:Sergio Carneros
 Temperature:25Deg
 Manufacturer:Luz Negra.S.L

Number: 34.003
 Date:2023-02-28 16:9:15
 Humidity:57%
 Remarks:100cm de tira flexible



Model:Ecoled Infinity 3000K
 Tester:Sergio Carneros
 Temperature:25Deg
 Manufacturer:Luz Negra.S.L

Number: 34.003
 Date:2023-02-28 16:9:15
 Humidity:57%
 Remarks:100cm de tira flexible



			Graphic shift(%)	
Hue Bin	Hue Angle	Rf	Chroma	Hue
1	0.0° - 22.5°	81	-8	1
2	22.5° - 45.0°	85	-5	4
3	45.0° - 67.5°	86	-3	5
4	67.5° - 90.0°	89	-4	0
5	90.0° - 112.5°	93	-3	1
6	112.5° - 135.0°	93	-2	0
7	135.0° - 157.5°	88	-5	0
8	157.5° - 180.0°	90	-4	3
9	180.0° - 202.5°	84	-4	7
10	202.5° - 225.0°	81	-2	10
11	225.0° - 247.5°	83	3	11
12	247.5° - 270.0°	87	4	2
13	270.0° - 292.5°	86	3	-9
14	292.5° - 315.0°	81	2	-12
15	315.0° - 337.5°	82	-1	-7
16	337.5° - 360.0°	78	-7	-9

Model:Ecoled Infinity 3000K
 Tester:Sergio Carneros
 Temperature:25Deg
 Manufacturer:Luz Negra.S.L

Number: 34.003
 Date:2023-02-28 16:9:15
 Humidity:57%
 Remarks:100cm de tira flexible