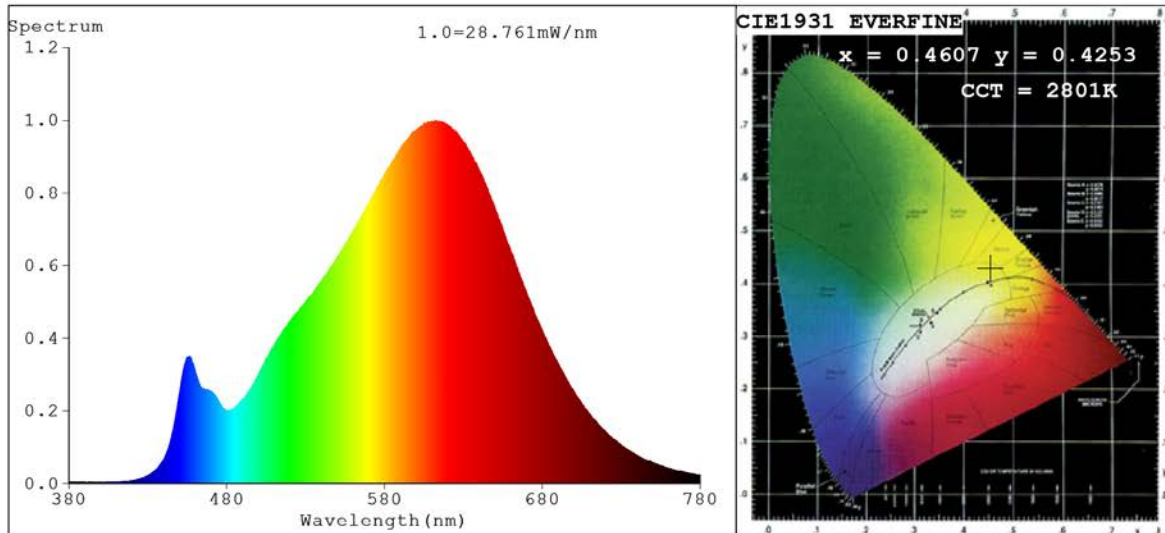


Spectrum Test Report



Color Parameters:

Chromaticity Coordinate: $x=0.4607$ $y=0.4253$ $u'=0.2566$ $v'=0.5329$
 CCT=2801K (Duv=0.0053) Dominant WL:Ld =582.1nm Purity=66.0%
 Ratio:R=24.3% G=73.4% B=2.3%; Peak WL:Lp=612.1nm FWHM=142.7nm
 Render Index:Ra=85.7 CRI=80.6 TM30:Rf=84 Rg=92
 R1 =84 R2 =92 R3 =99 R4 =83 R5 =83 R6 =90 R7 =88
 R8 =68 R9 =28 R10=80 R11=82 R12=69 R13=85 R14=99 R15=77

Photo Parameters:

Flux = 1417 lm Eff. : 101.78 lm/W Fe = 4.527 W Scotopic:1772.7 S/P:1.2511

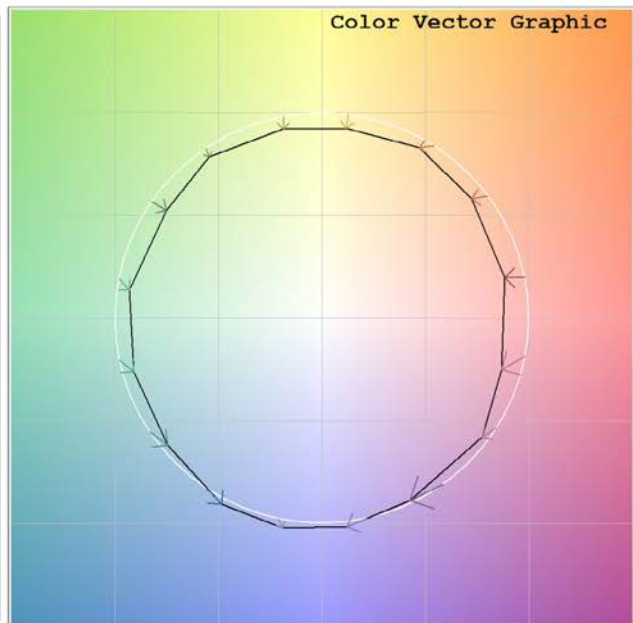
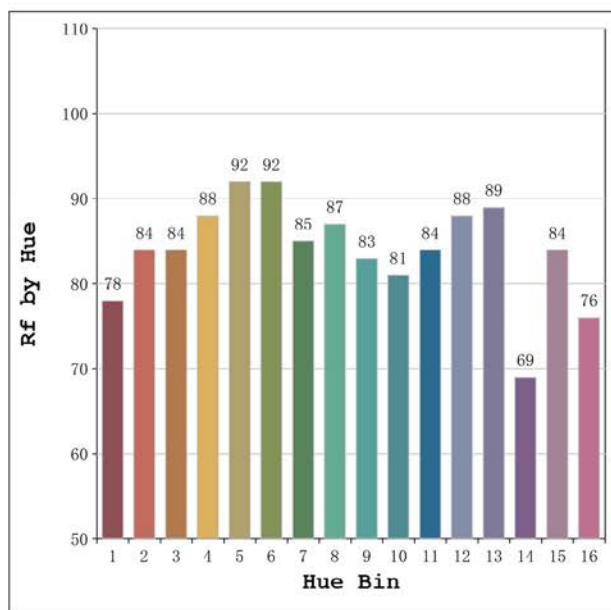
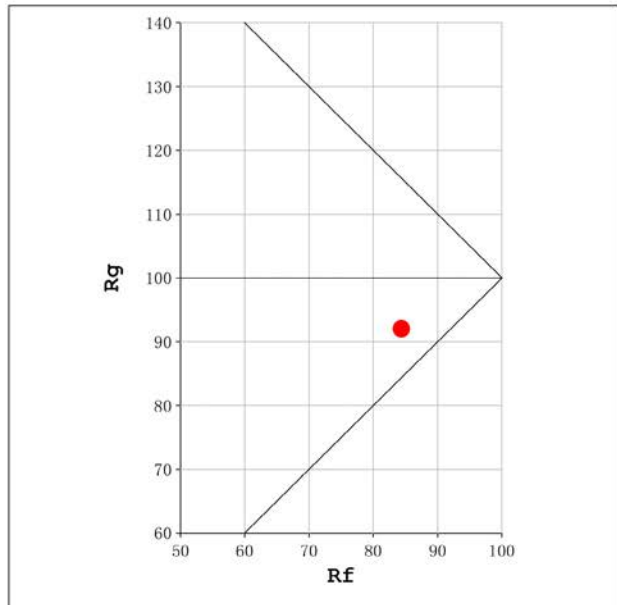
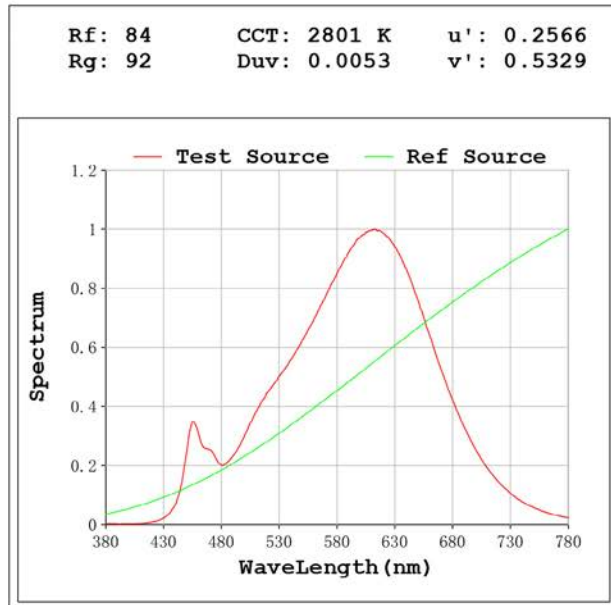
Electrical parameters:

V = 230.16 V I = 0.06674 A P = 13.92 W PF = 0.9063

Status: Integral T = 971 ms Ip = 52729 (80%)

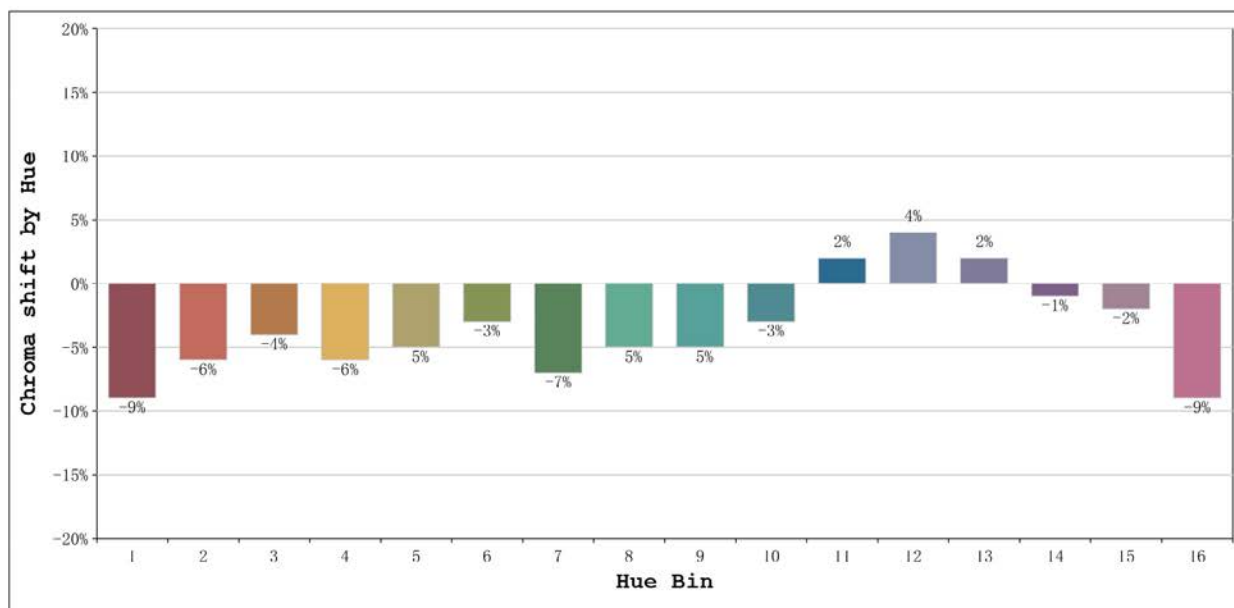
Model:Ecoled Infinity 14 2700K
 Tester:Sergio Carneros
 Temperature:20Deg
 Manufacturer:Luz Negra

Number: 34.004
 Date:2023-02-28 16:05:24
 Humidity:50%
 Remarks:100cm de tira flexible



Model:Ecoled Infinity 14 2700K
 Tester:Sergio Carneros
 Temperature:20Deg
 Manufacturer:Luz Negra

Number: 34.004
 Date:2023-02-28 16:05:24
 Humidity:50%
 Remarks:100cm de tira flexible



Hue Bin	Hue Angle	Rf	Graphic shift(%)	
			Chroma	Hue
1	0.0° - 22.5°	78	-9	2
2	22.5° - 45.0°	84	-6	3
3	45.0° - 67.5°	84	-4	5
4	67.5° - 90.0°	88	-6	0
5	90.0° - 112.5°	92	-5	1
6	112.5° - 135.0°	92	-3	1
7	135.0° - 157.5°	85	-7	0
8	157.5° - 180.0°	87	-5	4
9	180.0° - 202.5°	83	-5	7
10	202.5° - 225.0°	81	-3	10
11	225.0° - 247.5°	84	2	9
12	247.5° - 270.0°	88	4	3
13	270.0° - 292.5°	89	2	-9
14	292.5° - 315.0°	69	-1	-17
15	315.0° - 337.5°	84	-2	-7
16	337.5° - 360.0°	76	-9	-8

Model:Ecoled Infinity 14 2700K
 Tester:Sergio Carneros
 Temperature:20Deg
 Manufacturer:Luz Negra

Number: 34.004
 Date:2023-02-28 16:05:24
 Humidity:50%
 Remarks:100cm de tira flexible