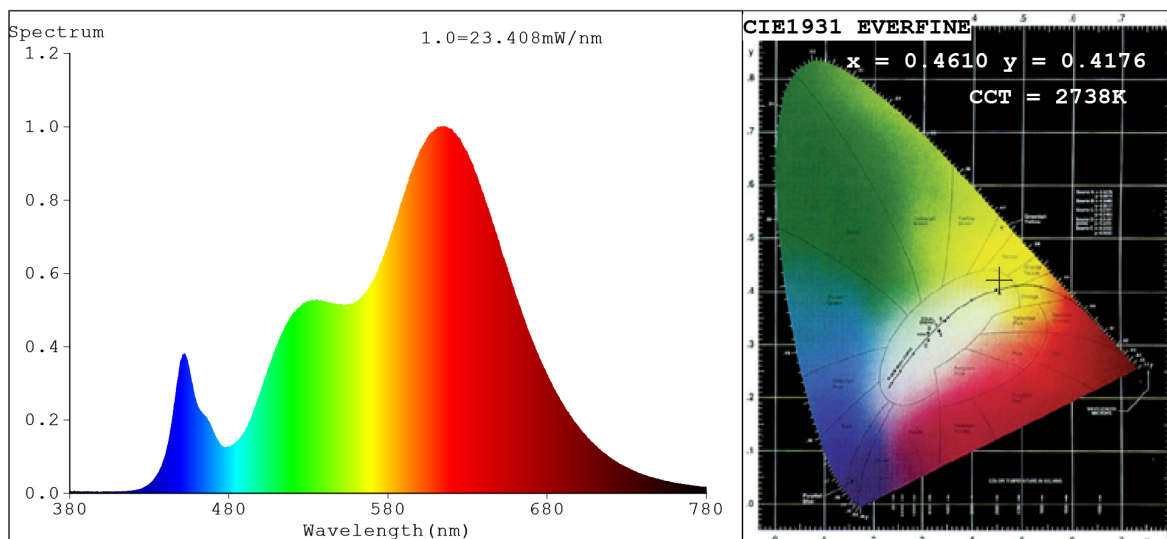


Spectrum Test Report



Color Parameters:

Chromaticity Coordinate: $x=0.4610$ $y=0.4176$ $u'=0.2601$ $v'=0.5302$
 CCT=2738K (Duv=0.0025) Dominant WL:Ld =583.3nm Purity=63.7%
 Ratio:R=26.5% G=71.4% B=2.1%; Peak WL:Lp=615.7nm FWHM=140.6nm
 Render Index:Ra=92.9 CRI=89.2 TM30:Rf=91 Rg=98
 R1 =94 R2 =96 R3 =99 R4 =97 R5 =94 R6 =98 R7 =90
 R8 =75 R9 =42 R10=91 R11=97 R12=82 R13=95 R14=98 R15=85

Photo Parameters:

Flux = 1029 lm Eff. : 102.52 lm/W Fe = 3.269 W

Electrical parameters:

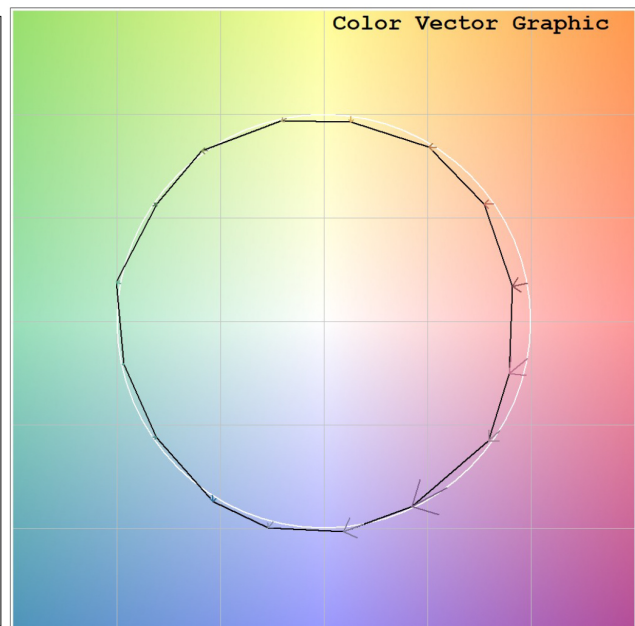
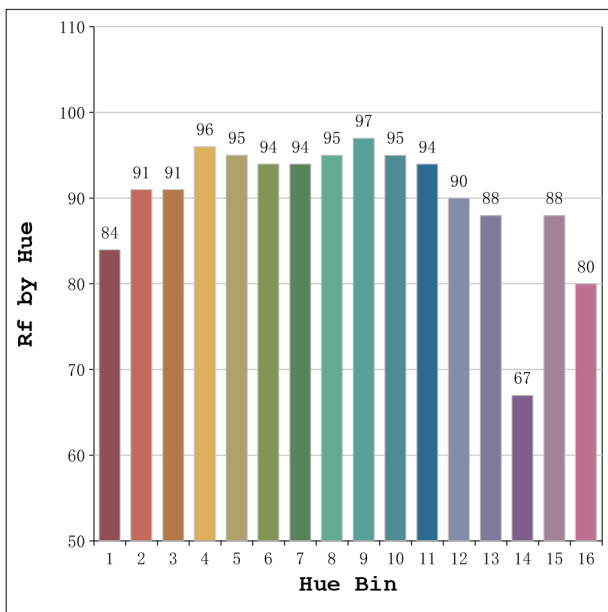
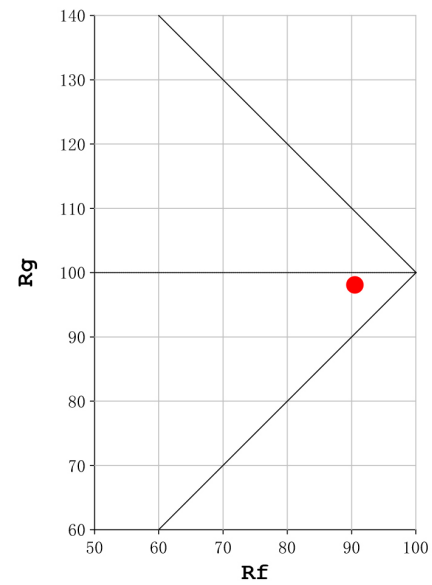
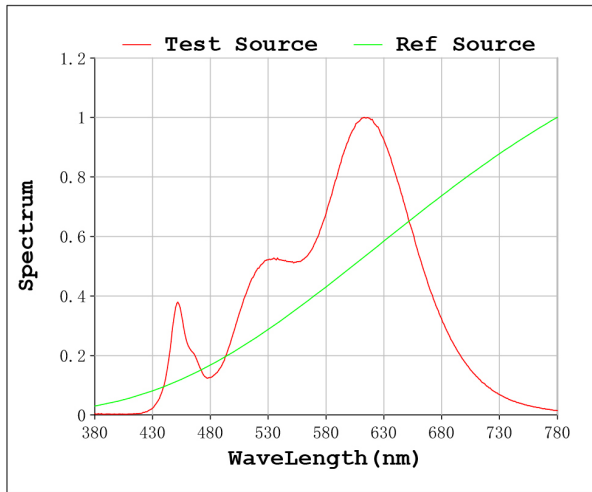
V = 23.998 V I = 0.4181 A P = 10.03 W PF = 1.000

Status: Integral T = 1000 ms Ip = 45464 (69%)

Model:Ecoled Cob slim 2700K
 Tester:Sergio Carneros
 Temperature:27Deg
 Manufacturer:Luz Negra S.L

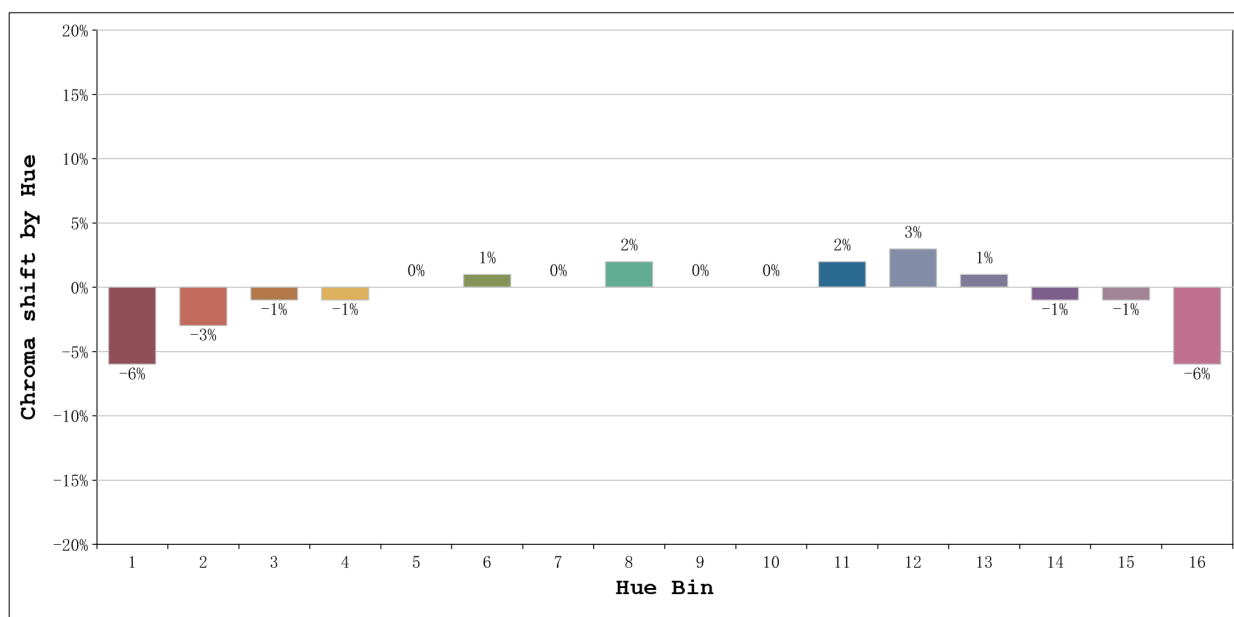
Number: 31.140
 Date:2023-11-20 11:10:28
 Humidity:40%
 Remarks:100cm de Tira flexible

Rf: 91 **CCT: 2738 K** **u': 0.2601**
Rg: 98 **Duv: 0.0025** **v': 0.5302**



Model:Ecoled Cob slim 2700K
 Tester:Sergio Carneros
 Temperature:27Deg
 Manufacturer:Luz Negra S.L

Number: 31.140
 Date:2023-11-20 11:10:28
 Humidity:40%
 Remarks:100cm de Tira flexible



			Graphic shift(%)	
Hue Bin	Hue Angle	Rf	Chroma	Hue
1	0.0° - 22.5°	84	-6	0
2	22.5° - 45.0°	91	-3	2
3	45.0° - 67.5°	91	-1	3
4	67.5° - 90.0°	96	-1	0
5	90.0° - 112.5°	95	0	3
6	112.5° - 135.0°	94	1	3
7	135.0° - 157.5°	94	0	-1
8	157.5° - 180.0°	95	2	0
9	180.0° - 202.5°	97	0	0
10	202.5° - 225.0°	95	0	1
11	225.0° - 247.5°	94	2	2
12	247.5° - 270.0°	90	3	-1
13	270.0° - 292.5°	88	1	-9
14	292.5° - 315.0°	67	-1	-18
15	315.0° - 337.5°	88	-1	-6
16	337.5° - 360.0°	80	-6	-8

Model:Ecoled Cob slim 2700K
 Tester:Sergio Carneros
 Temperature:27Deg
 Manufacturer:Luz Negra S.L

Number: 31.140
 Date:2023-11-20 11:10:28
 Humidity:40%
 Remarks:100cm de Tira flexible