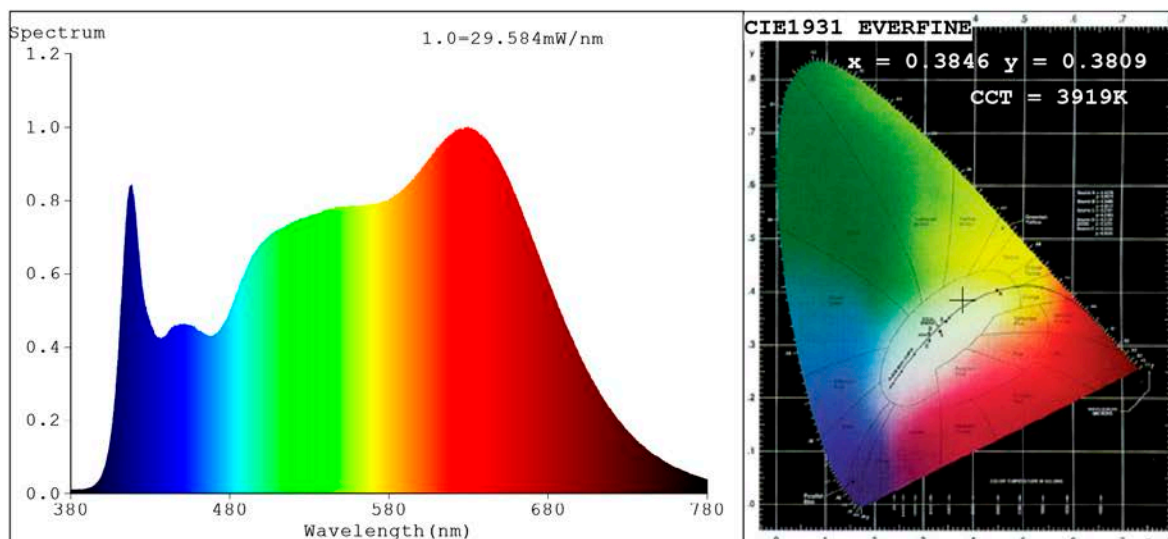


Spectrum Test Report



Color Parameters:

Chromaticity Coordinate: $x=0.3846$ $y=0.3809$ $u'=0.2262$ $v'=0.5040$
 CCT=3919K (Duv=0.0007) Dominant WL:Ld =579.0nm Purity=29.8%
 Ratio:R=20.9% G=74.5% B=4.6%;; Peak WL:Lp=629.6nm FWHM=206.9nm
 Render Index:Ra=97.6 CRI=96.9 TM30:Rf=95 Rg=101
 R1 =98 R2 =99 R3 =97 R4 =95 R5 =97 R6 =99 R7 =98
 R8 =98 R9 =97 R10=98 R11=94 R12=91 R13=99 R14=98 R15=98

Photo Parameters:

Flux = 1705 lm Eff. : 84.01 lm/W Fe = 6.464 W Scotopic:3117.9 S/P:1.8288

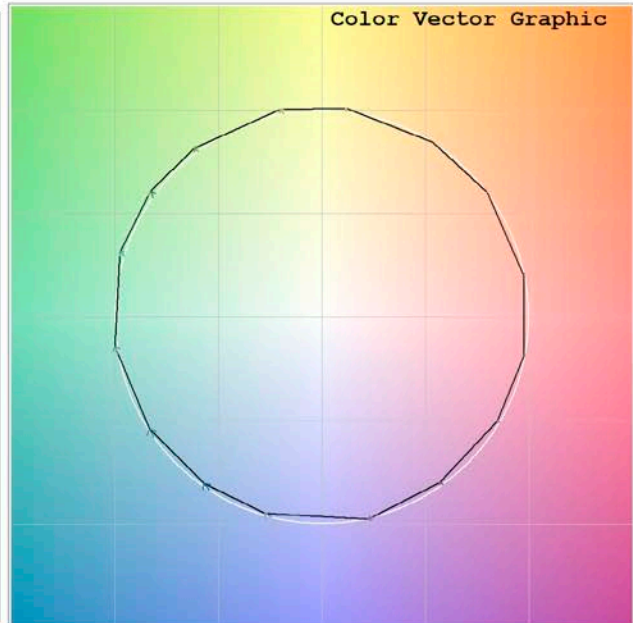
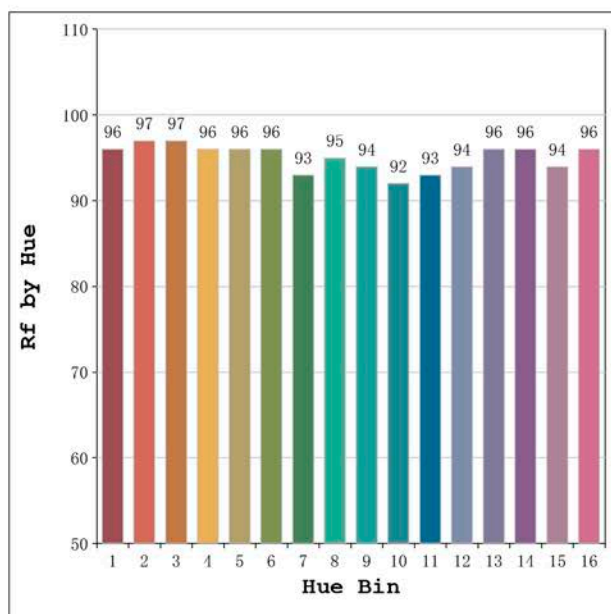
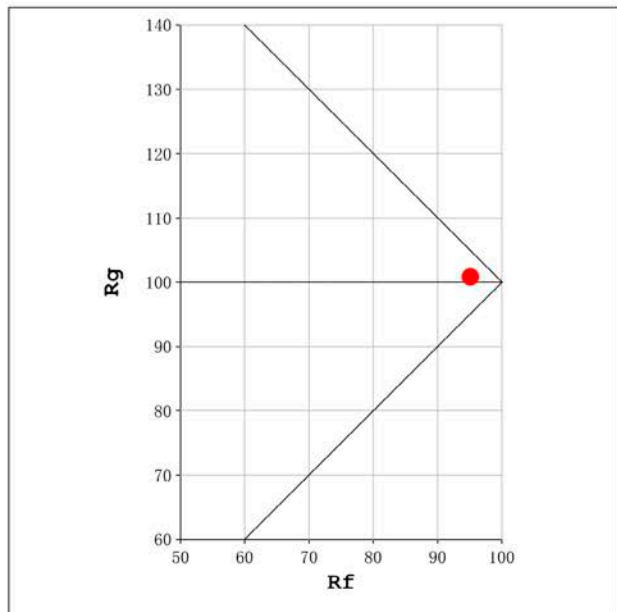
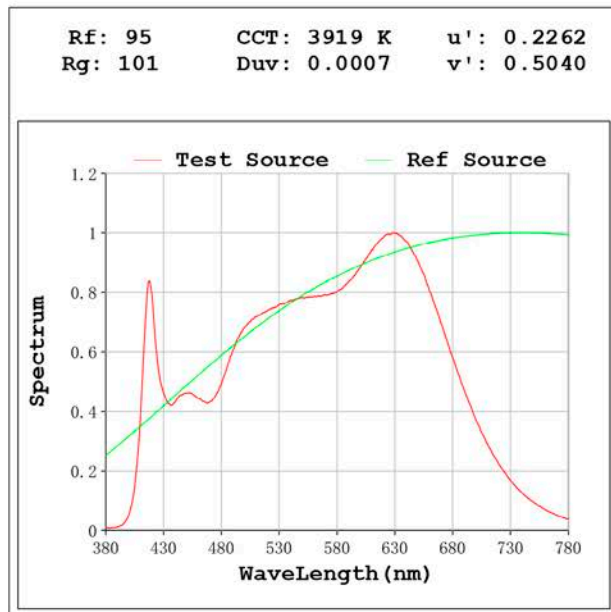
Electrical parameters:

V = 23.998 V I = 0.8457 A P = 20.30 W PF = 1.000

Status: Integral T = 977 ms Ip = 54249 (83%)

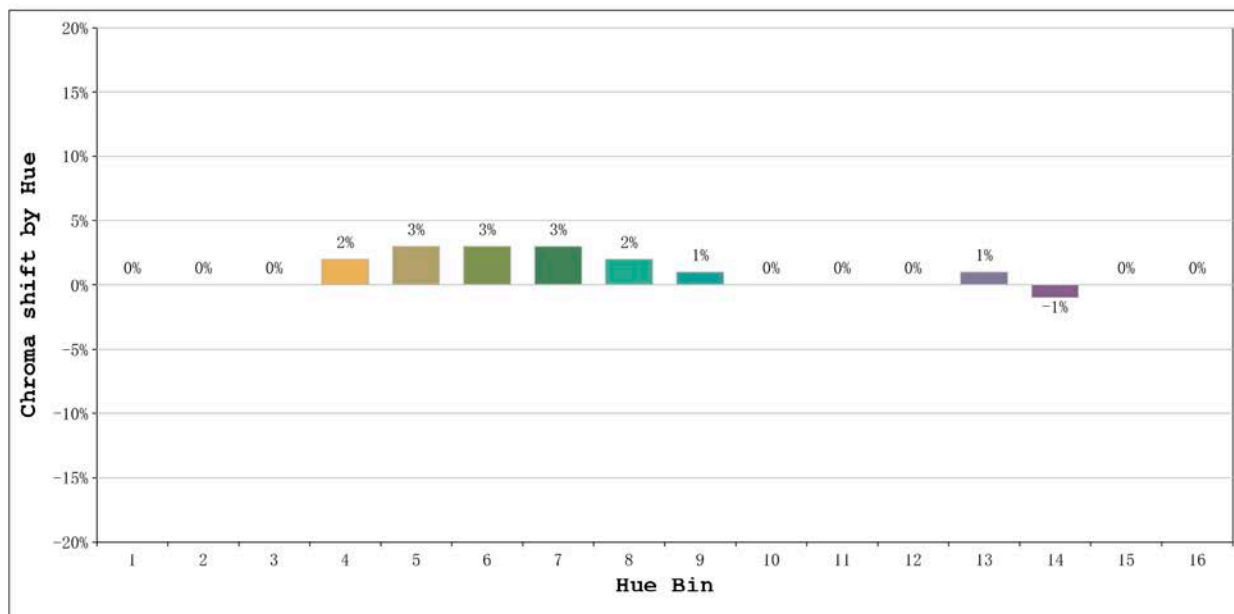
Model:Ecoled Málaga 4000K
 Tester:Sergio Carneros
 Temperature:20Deg
 Manufacturer:Luz Negra

Number: 33.200
 Date:2022-06-07 15:07:57
 Humidity:57%
 Remarks:100cm de tira flexible



Model:Ecoled Málaga 4000K
 Tester:Sergio Carneros
 Temperature:20Deg
 Manufacturer:Luz Negra

Number: 33.200
 Date:2022-06-07 15:07:57
 Humidity:57%
 Remarks:100cm de tira flexible



			Graphic shift(%)	
Hue Bin	Hue Angle	Rf	Chroma	Hue
1	0.0° - 22.5°	96	0	0
2	22.5° - 45.0°	97	0	0
3	45.0° - 67.5°	97	0	0
4	67.5° - 90.0°	96	2	1
5	90.0° - 112.5°	96	3	1
6	112.5° - 135.0°	96	3	1
7	135.0° - 157.5°	93	3	-1
8	157.5° - 180.0°	95	2	-1
9	180.0° - 202.5°	94	1	-3
10	202.5° - 225.0°	92	0	-4
11	225.0° - 247.5°	93	0	-3
12	247.5° - 270.0°	94	0	-3
13	270.0° - 292.5°	96	1	-2
14	292.5° - 315.0°	96	-1	0
15	315.0° - 337.5°	94	0	0
16	337.5° - 360.0°	96	0	0

Model:Ecoledd Málaga 4000K
Tester:Sergio Carneros
Temperature:20Deg
Manufacturer:Luz Negra

Number: 33.200
Date:2022-06-07 15:07:57
Humidity:57%
Remarks:100cm de tira flexible