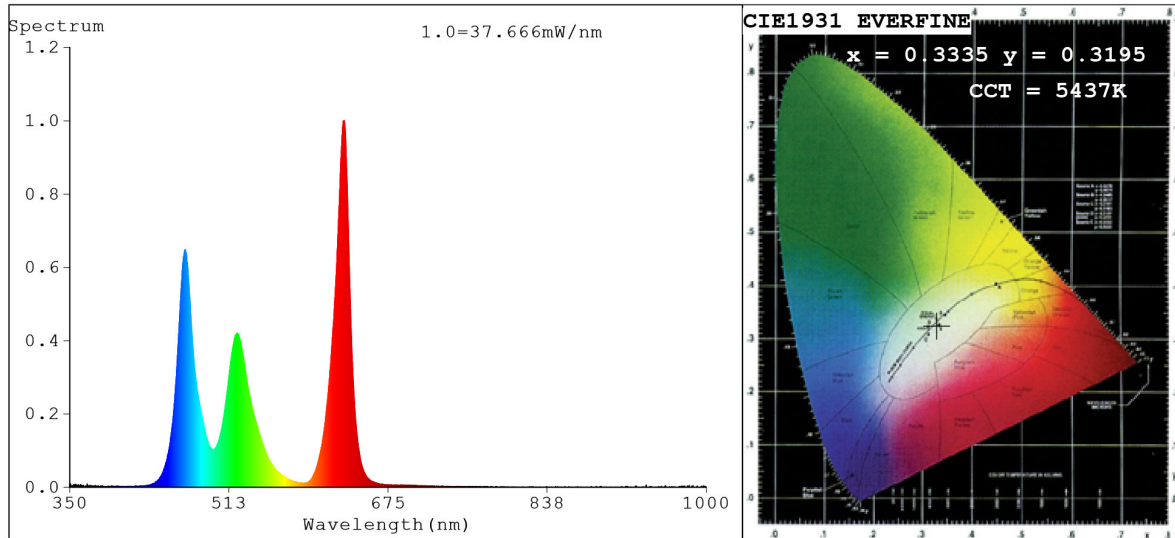


Spectrum Test Report



Color Parameters:

Chromaticity Coordinate: $x=0.3335$ $y=0.3195$ / $u'=0.2163$ $v'=0.4662$
 CCT=5437K (Duv=-0.0121) Dominant WL:Ld =-554.0nm Purity=4.2%
 Ratio:R=32.2% G=59.1% B=8.7%; Peak WL:Lp=630.2nm FWHM=16.1nm
 Render Index:Ra=25.2 CRI=21.2 TM30:Rf=37 Rg=116
 R1 =0 R2 =41 R3 =79 R4 =4 R5 =6 R6 =22 R7 =49
 R8 =0 R9 =0 R10=0 R11=0 R12=14 R13=0 R14=81 R15=0

Photo Parameters:

Flux = 470.5 lm Eff. : 31.68 lm/W Fe = 1.876 W

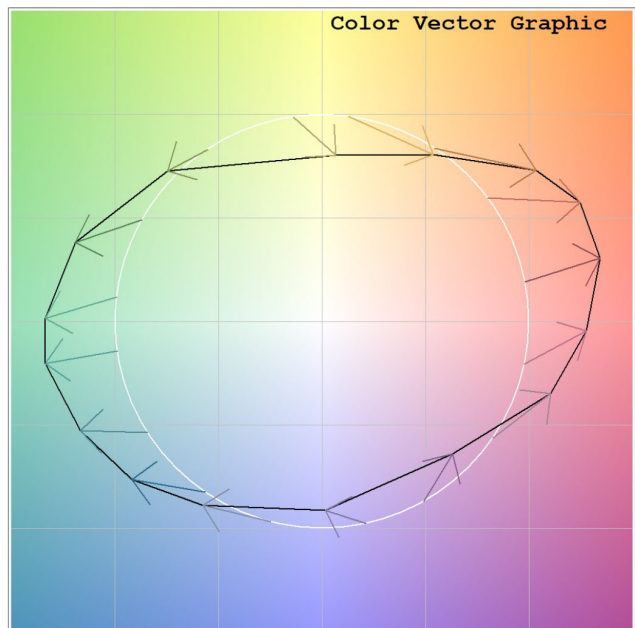
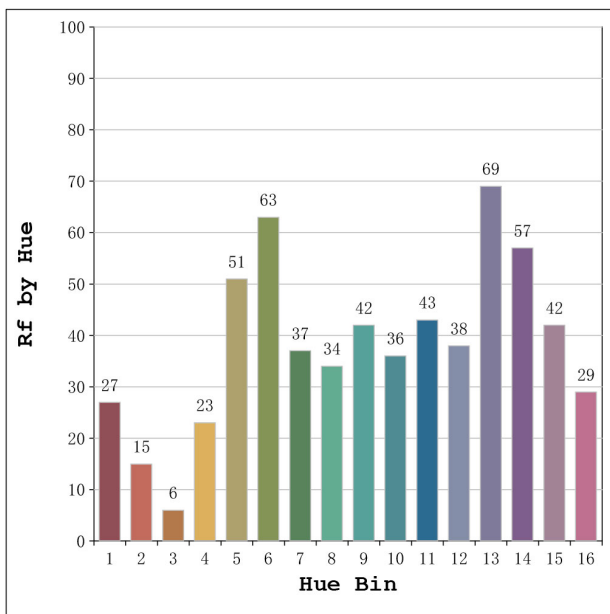
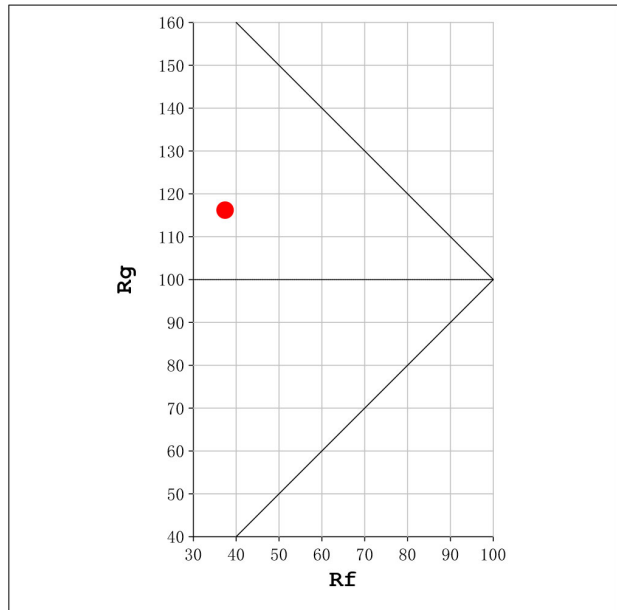
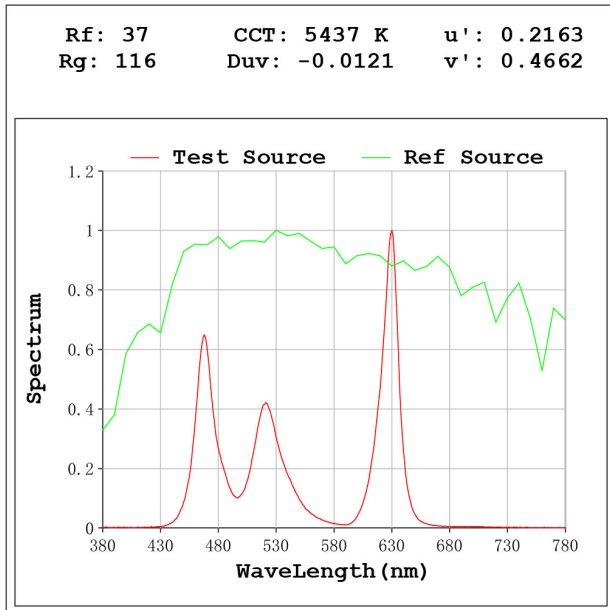
Electrical parameters:

V = 23.998 V I = 0.6189 A P = 14.85 W PF = 1.000

Status: Integral T = 500 ms Ip = 32722 (50%)

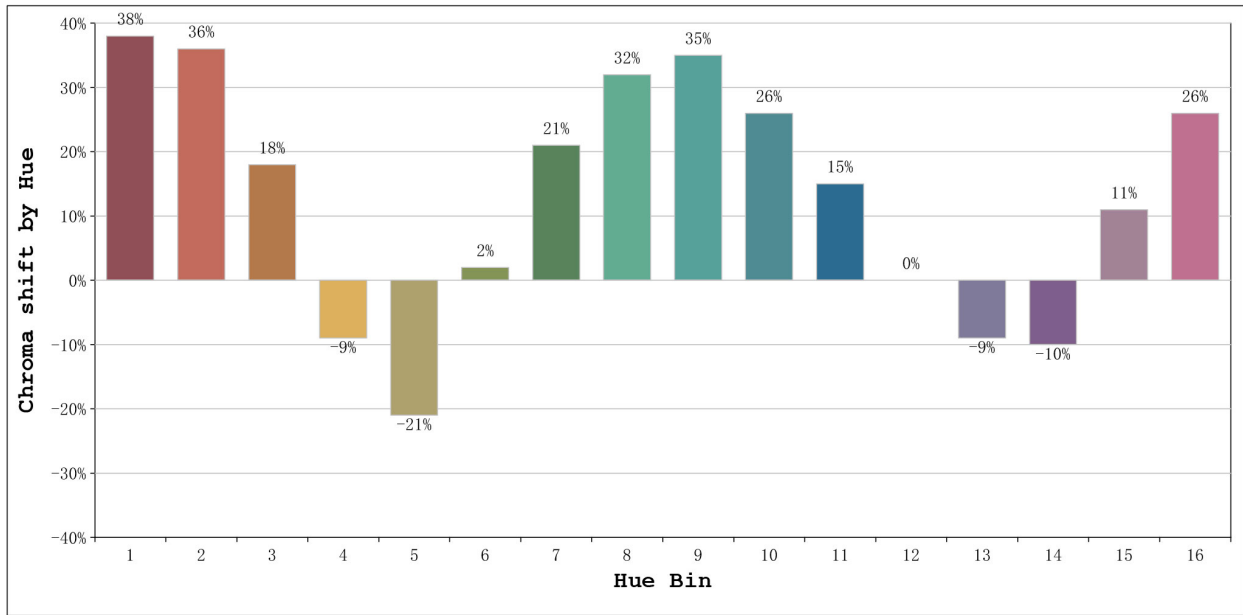
Model:Ecoled 360 RGBW
 Tester:Sergio Carneros
 Temperature:27Deg
 Manufacturer:Luz Negra S.L

Number: 10.283
 Date:2024-10-09 09:44:09
 Humidity:40%
 Remarks:100cm de néon (R+G+B)



Model:Ecoled 360 RGBW
 Tester:Sergio Carneros
 Temperature:27Deg
 Manufacturer:Luz Negra S.L

Number: 10.283
 Date:2024-10-09 09:44:09
 Humidity:40%
 Remarks:100cm de néon (R+G+B)

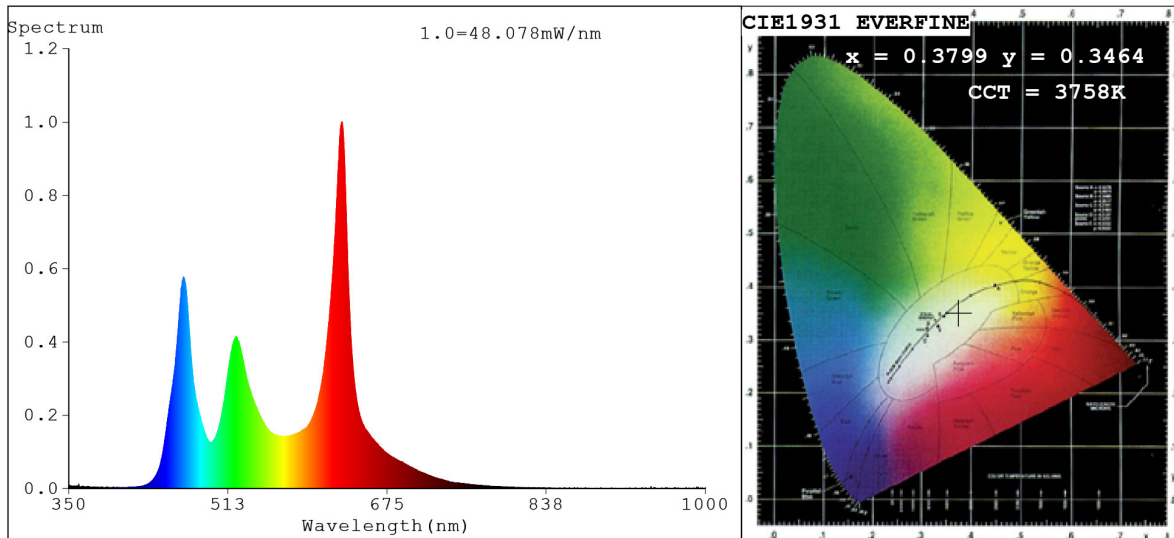


Hue Bin	Hue Angle	Rf	Graphic shift (%)	
			Chroma	Hue
1	0.0° - 22.5°	27	38	4
2	22.5° - 45.0°	15	36	-25
3	45.0° - 67.5°	6	18	-46
4	67.5° - 90.0°	23	-9	-43
5	90.0° - 112.5°	51	-21	-16
6	112.5° - 135.0°	63	2	22
7	135.0° - 157.5°	37	21	27
8	157.5° - 180.0°	34	32	17
9	180.0° - 202.5°	42	35	0
10	202.5° - 225.0°	36	26	-18
11	225.0° - 247.5°	43	15	-32
12	247.5° - 270.0°	38	0	-32
13	270.0° - 292.5°	69	-9	-17
14	292.5° - 315.0°	57	-10	24
15	315.0° - 337.5°	42	11	34
16	337.5° - 360.0°	29	26	22

Model:Ecoled 360 RGBW
 Tester:Sergio Carneros
 Temperature:27Deg
 Manufacturer:Luz Negra S.L

Number: 10.283
 Date:2024-10-09 09:44:09
 Humidity:40%
 Remarks:100cm de néon (R+G+B)

Spectrum Test Report



Color Parameters:

Chromaticity Coordinate: $x=0.3799$ $y=0.3464$ / $u'=0.2375$ $v'=0.4874$
 CCT=3758K (Duv=-0.0147) Dominant WL:Ld =593.2nm Purity=17.9%
 Ratio:R=30.1% G=63.9% B=6.0%;; Peak WL:Lp=629.0nm FWHM=19.4nm
 Render Index:Ra=55.3 CRI=47.5 TM30:Rf=66 Rg=111
 R1 =39 R2 =64 R3 =91 R4 =46 R5 =43 R6 =46 R7 =79
 R8 =34 R9 =0 R10=25 R11=30 R12=33 R13=42 R14=93 R15=38

Photo Parameters:

Flux = 877.1 lm Eff. : 38.79 lm/W Fe = 3.315 W

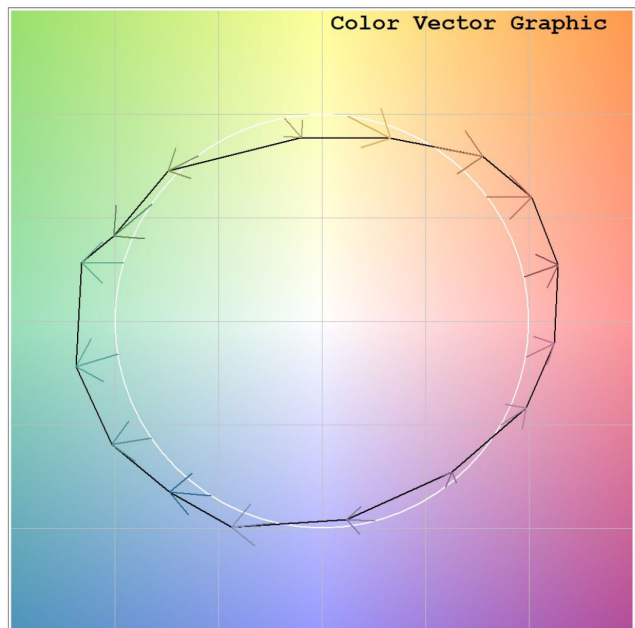
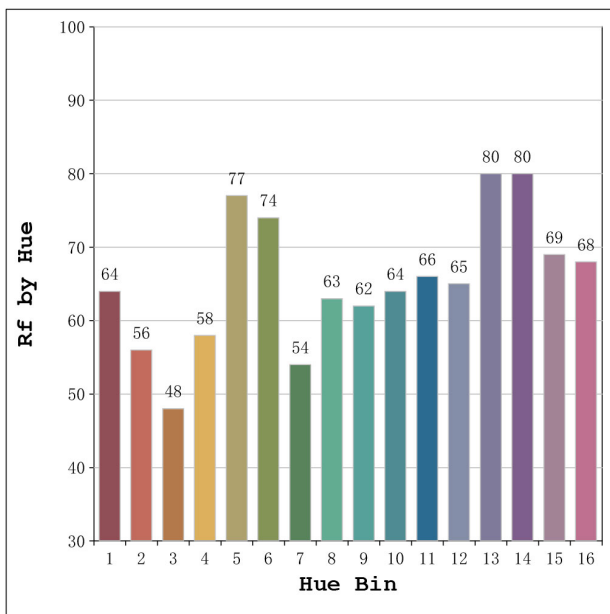
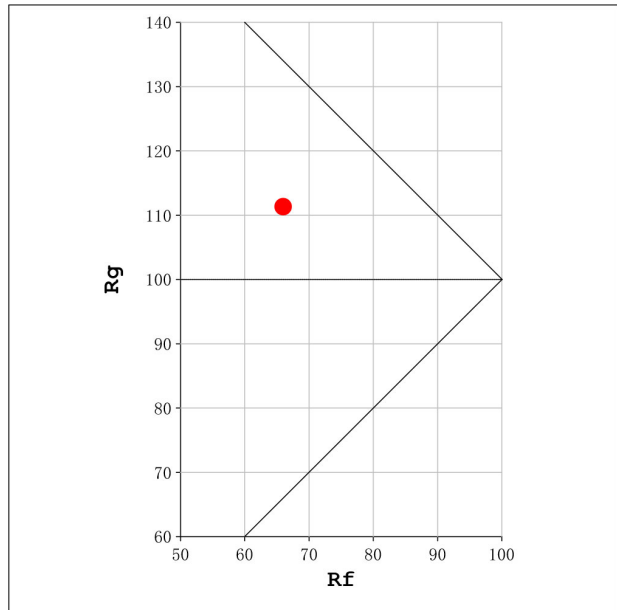
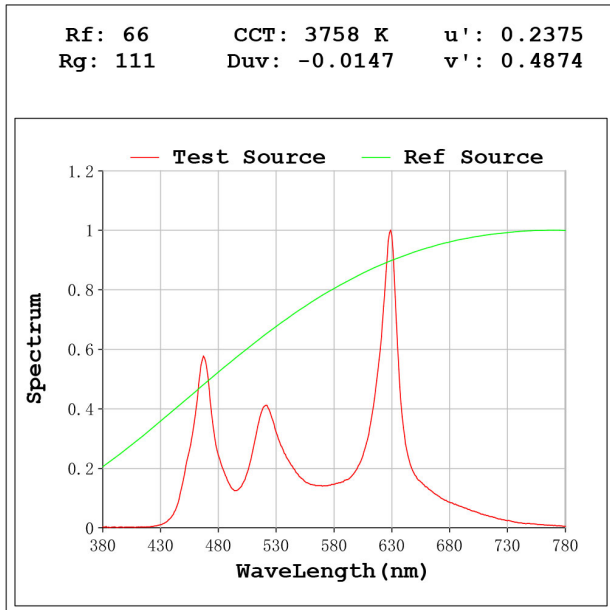
Electrical parameters:

V = 23.998 V I = 0.9423 A P = 22.61 W PF = 1.000

Status: Integral T = 500 ms Ip = 41866 (64%)

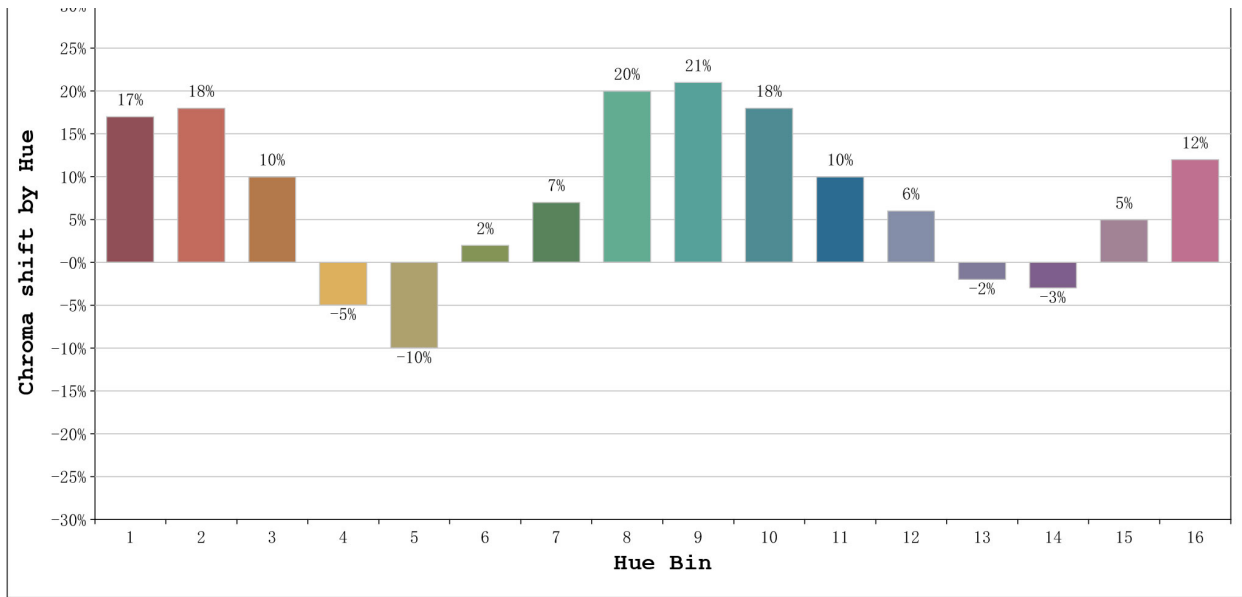
Model:Ecoled 360 RGBW
 Tester:Sergio Carneros
 Temperature:27Deg
 Manufacturer:Luz Negra S.L

Number: 10.283
 Date:2024-10-09 09:42:19
 Humidity:40%
 Remarks:100cm de néon (R+G+B+W)



Model:Ecoled 360 RGBW
 Tester:Sergio Carneros
 Temperature:27Deg
 Manufacturer:Luz Negra S.L

Number: 10.283
 Date:2024-10-09 09:42:19
 Humidity:40%
 Remarks:100cm de néon (R+G+B+W)

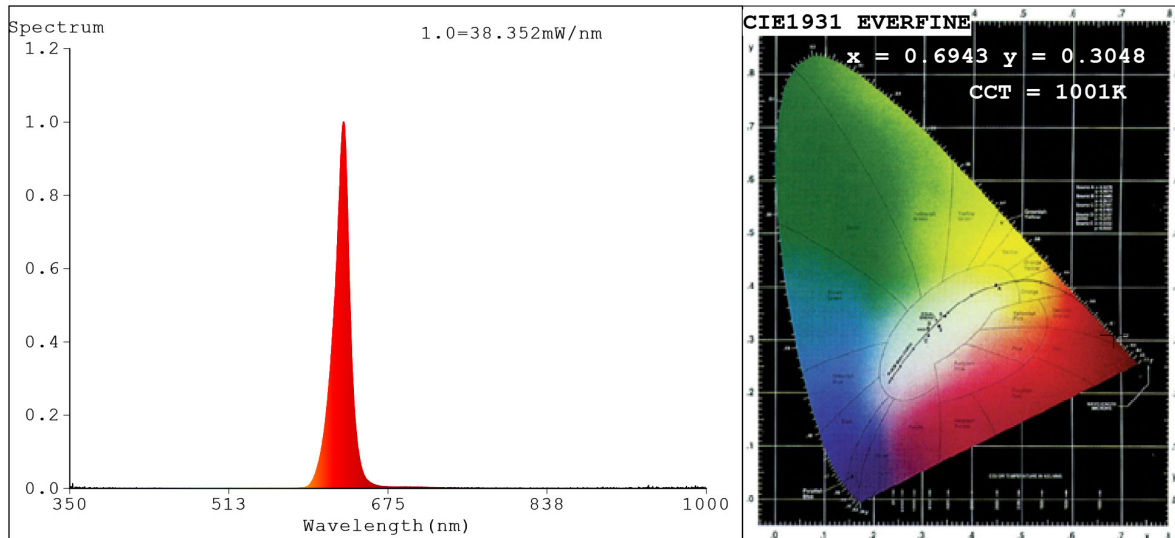


Hue Bin	Hue Angle	Rf	Graphic shift(%)	
			Chroma	Hue
1	0.0° - 22.5°	64	17	3
2	22.5° - 45.0°	56	18	-11
3	45.0° - 67.5°	48	10	-21
4	67.5° - 90.0°	58	-5	-21
5	90.0° - 112.5°	77	-10	-5
6	112.5° - 135.0°	74	2	16
7	135.0° - 157.5°	54	7	23
8	157.5° - 180.0°	63	20	4
9	180.0° - 202.5°	62	21	2
10	202.5° - 225.0°	64	18	-7
11	225.0° - 247.5°	66	10	-17
12	247.5° - 270.0°	65	6	-19
13	270.0° - 292.5°	80	-2	-12
14	292.5° - 315.0°	80	-3	6
15	315.0° - 337.5°	69	5	14
16	337.5° - 360.0°	68	12	9

Model:Ecoled 360 RGBW
 Tester:Sergio Carneros
 Temperature:27Deg
 Manufacturer:Luz Negra S.L

Number: 10.283
 Date:2024-10-09 09:42:19
 Humidity:40%
 Remarks:100cm de néon (R+G+B+W)

Spectrum Test Report



Color Parameters:

Chromaticity Coordinate: $x=0.6943$ $y=0.3048$ / $u'=0.5271$ $v'=0.5206$
 CCT=1001K (Duv=-0.0796) Dominant WL:Ld =621.9nm Purity=99.7%
 Ratio:R=98.1% G=1.9% B=0.0%;; Peak WL:Lp=629.6nm FWHM=15.9nm
 Render Index:Ra=25.0 CRI=31.2 TM30:Rf=5 Rg=-1
 R1 =4 R2 =79 R3 =26 R4 =0 R5 =0 R6 =91 R7 =0
 R8 =0 R9 =0 R10=73 R11=0 R12=79 R13=29 R14=57 R15=0

Photo Parameters:

Flux = 155.8 lm Eff. : 21.40 lm/W Fe = 760.0 mW

Electrical parameters:

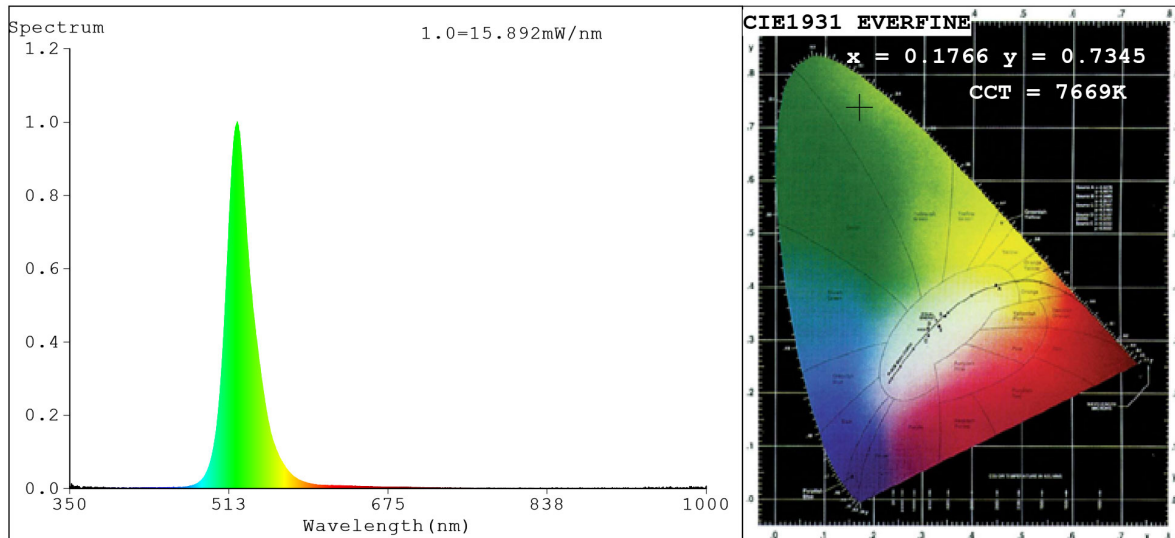
V = 23.998 V I = 0.3033 A P = 7.279 W PF = 1.000

Status: Integral T = 500 ms Ip = 33378 (51%)

Model:Ecoled 360 RGBW
 Tester:Sergio Carneros
 Temperature:27Deg
 Manufacturer:Luz Negra S.L

Number: 10.283
 Date:2024-10-09 09:44:24
 Humidity:40%
 Remarks:100cm de néon (R)

Spectrum Test Report



Color Parameters:

Chromaticity Coordinate: $x=0.1766$ $y=0.7345$ / $u'=0.0616$ $v'=0.5768$
 CCT=7669K (Duv=0.1568) Dominant WL:Ld =529.0nm Purity=84.1%
 Ratio:R=0.6% G=98.3% B=1.1%; Peak WL:Lp=521.0nm FWHM=27.7nm
 Render Index:Ra=0.0 CRI=2.6 TM30:Rf=0 Rg=8
 R1 =0 R2 =0 R3 =0 R4 =0 R5 =0 R6 =0 R7 =0
 R8 =0 R9 =0 R10=0 R11=0 R12=0 R13=0 R14=36 R15=0

Photo Parameters:

Flux = 272.5 lm Eff. : 67.19 lm/W Fe = 547.7 mW

Electrical parameters:

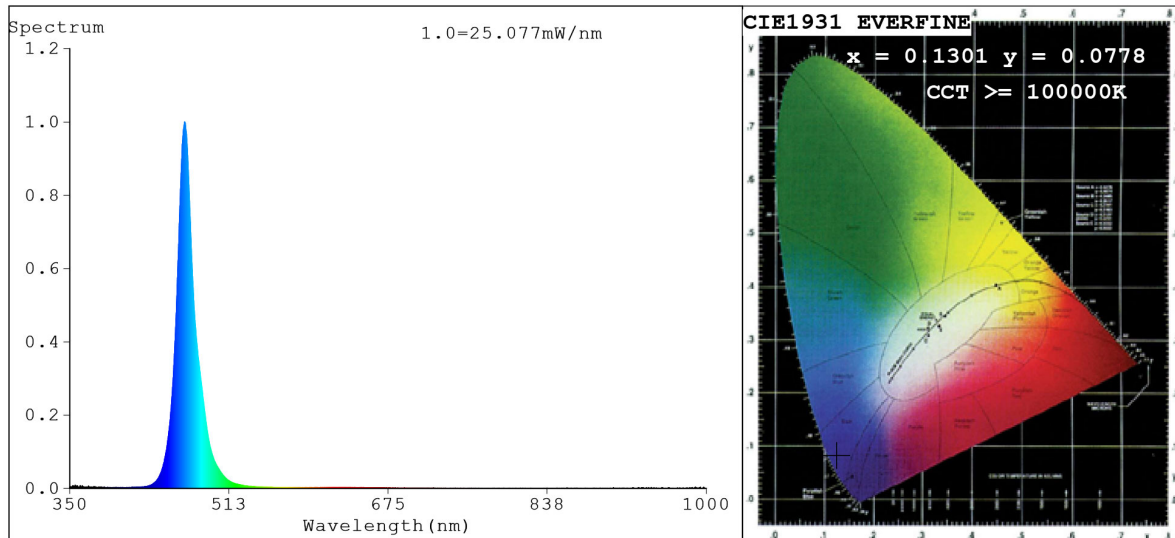
V = 23.998 V I = 0.1690 A P = 4.056 W PF = 1.000

Status: Integral T = 1480 ms Ip = 49376 (75%)

Model:Ecoled 360 RGBW
 Tester:Sergio Carneros
 Temperature:27Deg
 Manufacturer:Luz Negra S.L

Number: 10.283
 Date:2024-10-09 09:44:45
 Humidity:40%
 Remarks:100cm de néon (G)

Spectrum Test Report



Color Parameters:

Chromaticity Coordinate: $x=0.1301$ $y=0.0778$ / $u'=0.1416$ $v'=0.1907$
 CCT=100000K (Duv=0.1442) Dominant WL:Ld =471.5nm Purity=95.3%
 Ratio:R=1.5% G=19.4% B=79.2%;; Peak WL:Lp=467.3nm FWHM=17.8nm
 Render Index:Ra=1.9 CRI=1.1 TM30:Rf=0 Rg=-17
 R1 =0 R2 =0 R3 =0 R4 =0 R5 =15 R6 =0 R7 =0
 R8 =0 R9 =0 R10=0 R11=0 R12=0 R13=0 R14=0 R15=9

Photo Parameters:

Flux = 47.92 lm Eff. : 13.51 lm/W Fe = 597.2 mW

Electrical parameters:

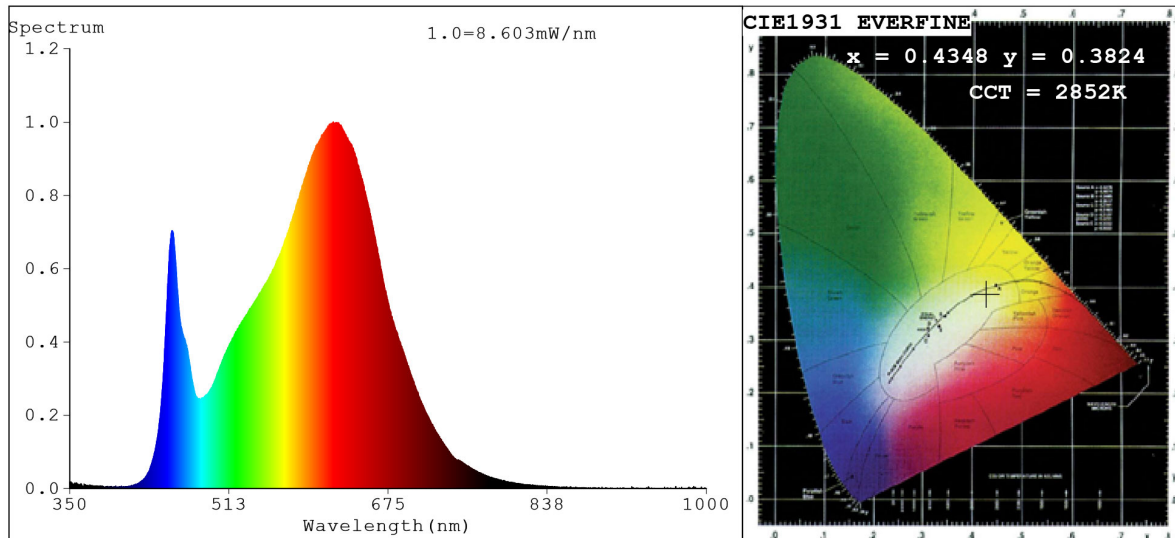
V = 23.998 V I = 0.1478 A P = 3.547 W PF = 1.000

Status: Integral T = 1297 ms Ip = 49610 (76%)

Model:Ecoled 360 RGBW
 Tester:Sergio Carneros
 Temperature:27Deg
 Manufacturer:Luz Negra S.L

Number: 10.283
 Date:2024-10-09 09:45:07
 Humidity:40%
 Remarks:100cm de néon (B)

Spectrum Test Report



Color Parameters:

Chromaticity Coordinate: $x=0.4348$ $y=0.3824$ / $u'=0.2588$ $v'=0.5122$
 CCT=2852K (Duv=-0.0086) Dominant WL:Ld =587.0nm Purity=45.2%
 Ratio:R=25.9% G=70.9% B=3.2%;;Peak WL:Lp=619.0nm FWHM=139.3nm
 Render Index:Ra=91.6 CRI=90.1 TM30:Rf=88 Rg=103
 R1 =95 R2 =97 R3 =94 R4 =91 R5 =96 R6 =93 R7 =87
 R8 =80 R9 =62 R10=97 R11=92 R12=82 R13=97 R14=98 R15=92

Photo Parameters:

Flux = 400.1 lm Eff. : 49.03 lm/W Fe = 1.437 W

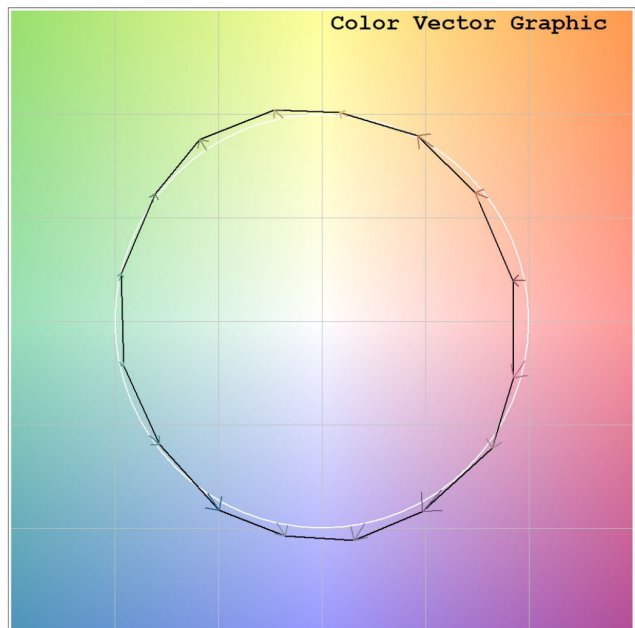
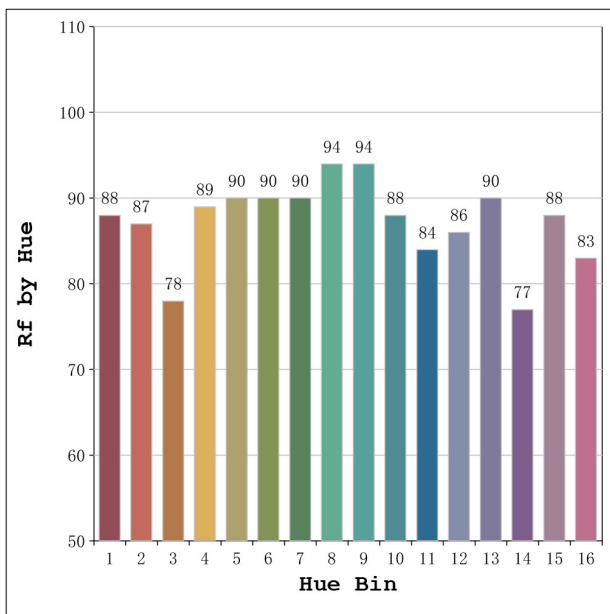
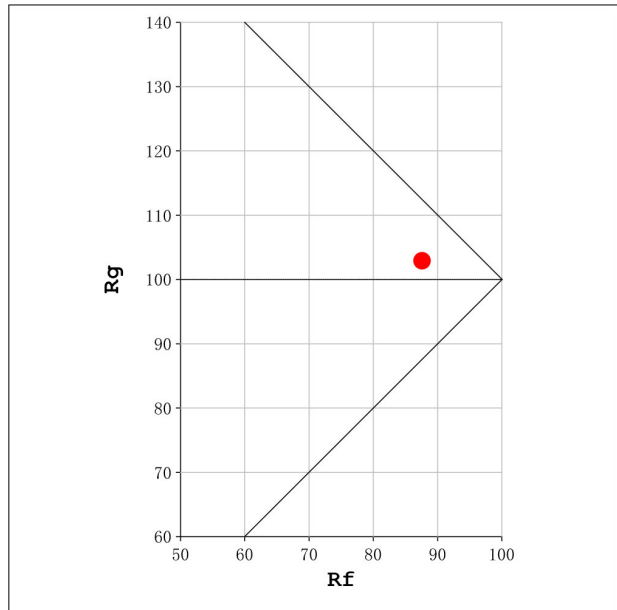
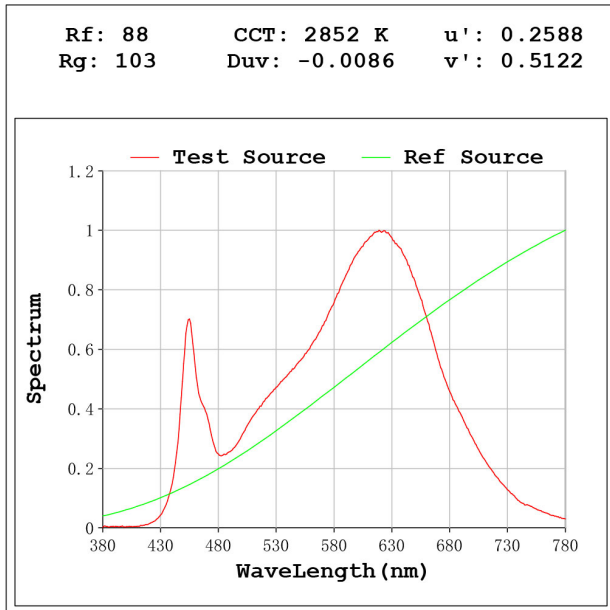
Electrical parameters:

V = 23.998 V I = 0.3400 A P = 8.159 W PF = 1.000

Status: Integral T = 2892 ms Ip = 46571 (71%)

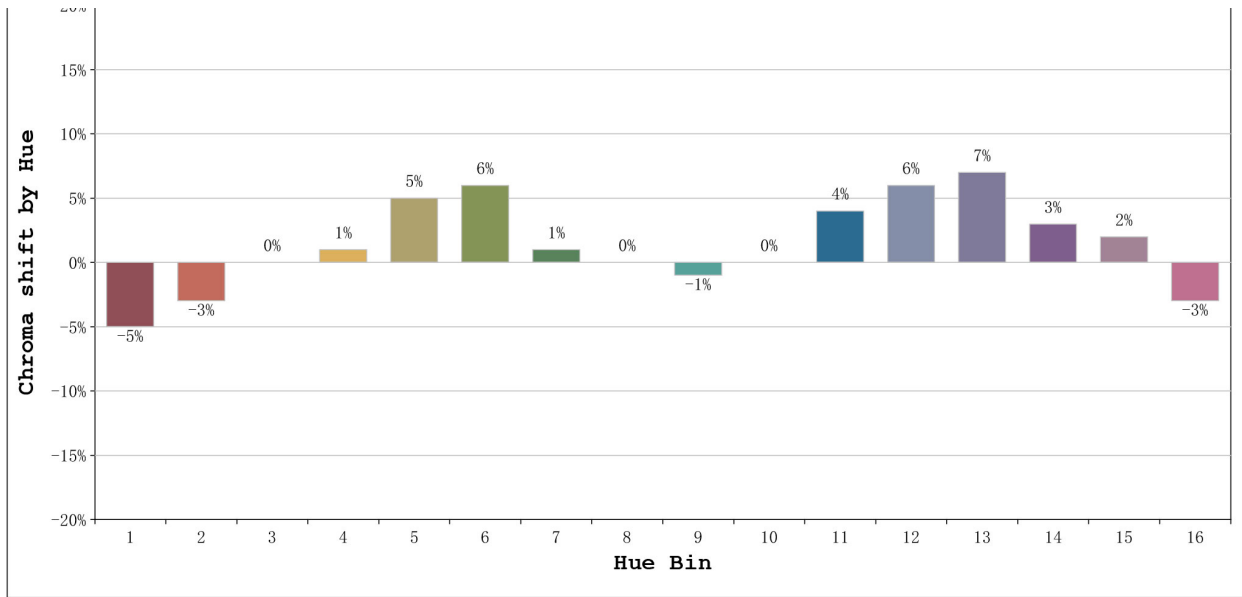
Model:Ecoled 360 RGBW
 Tester:Sergio Carneros
 Temperature:27Deg
 Manufacturer:Luz Negra S.L

Number: 10.283
 Date:2024-10-09 09:43:41
 Humidity:40%
 Remarks:100cm de néon (W)



Model:Ecoled 360 RGBW
Tester:Sergio Carneros
Temperature:27Deg
Manufacturer:Luz Negra S.L

Number: 10.283
Date:2024-10-09 09:43:41
Humidity:40%
Remarks:100cm de néon (W)



Hue Bin	Hue Angle	Rf	Graphic shift(%)	
			Chroma	Hue
1	0.0° - 22.5°	88	-5	1
2	22.5° - 45.0°	87	-3	5
3	45.0° - 67.5°	78	0	10
4	67.5° - 90.0°	89	1	4
5	90.0° - 112.5°	90	5	3
6	112.5° - 135.0°	90	6	0
7	135.0° - 157.5°	90	1	-3
8	157.5° - 180.0°	94	0	-2
9	180.0° - 202.5°	94	-1	2
10	202.5° - 225.0°	88	0	6
11	225.0° - 247.5°	84	4	9
12	247.5° - 270.0°	86	6	5
13	270.0° - 292.5°	90	7	-5
14	292.5° - 315.0°	77	3	-12
15	315.0° - 337.5°	88	2	-6
16	337.5° - 360.0°	83	-3	-8

Model:Ecoled 360 RGBW
 Tester:Sergio Carneros
 Temperature:27Deg
 Manufacturer:Luz Negra S.L

Number: 10.283
 Date:2024-10-09 09:43:41
 Humidity:40%
 Remarks:100cm de néon (W)