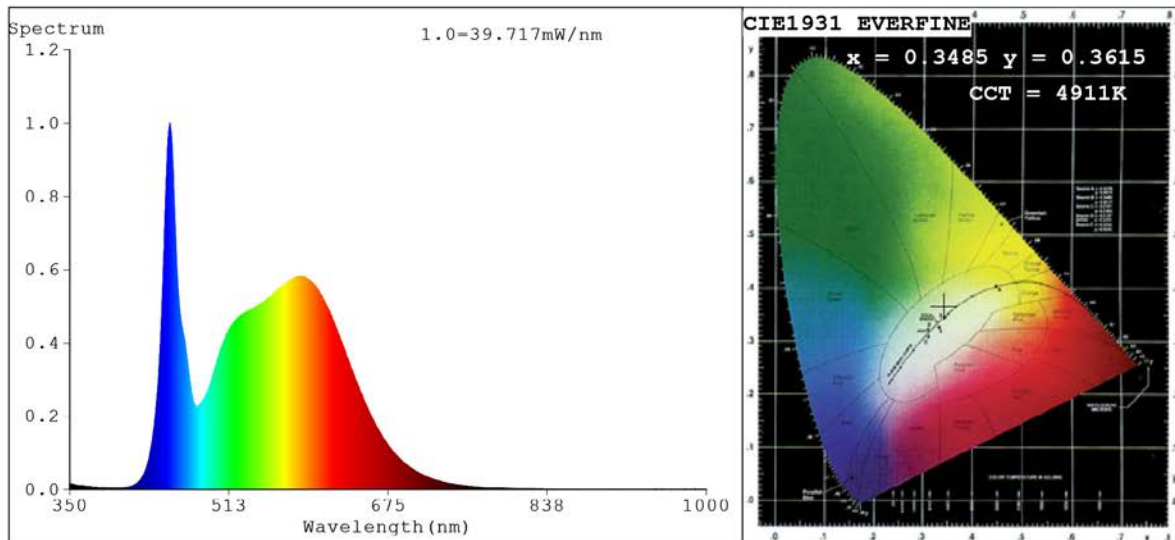


Spectrum Test Report



Color Parameters:

Chromaticity Coordinate: $x=0.3485$ $y=0.3615$ $u'=0.2099$ $v'=0.4899$
 CCT=4911K(Duv=0.0036) Dominant WL:Ld =570.7nm Purity=13.0%
 Ratio:R=15.6% G=79.8% B=4.6%;;Peak WL:Lp=452.2nm FWHM=17.7nm
 Render Index:Ra=82.2 CRI=74.6 TM30:Rf=81 Rg=93
 R1 =80 R2 =89 R3 =95 R4 =80 R5 =80 R6 =84 R7 =86
 R8 =64 R9 =0 R10=73 R11=79 R12=55 R13=83 R14=97 R15=73

Photo Parameters:

Flux = 1423 lm Eff. : 119.13 lm/W Fe = 4.341 W

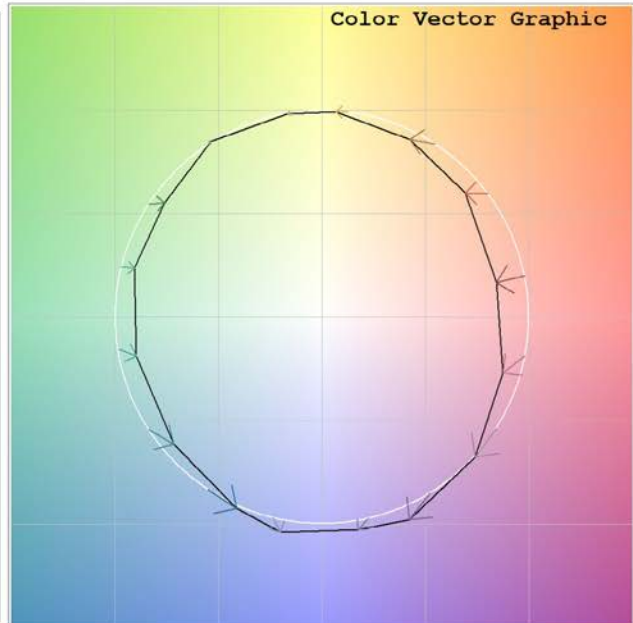
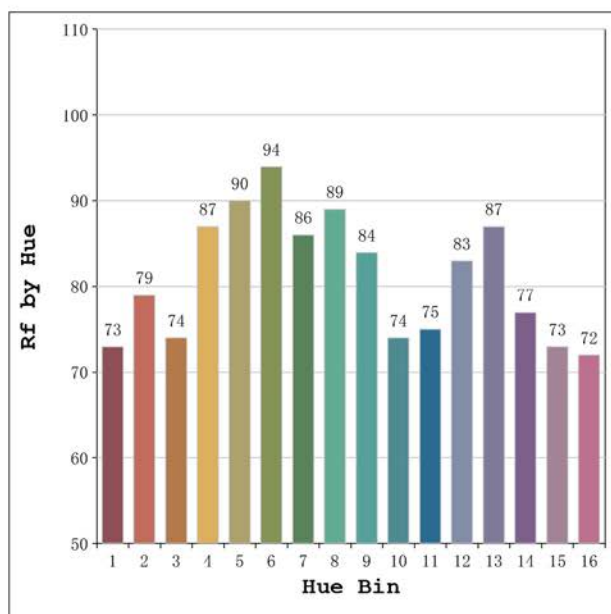
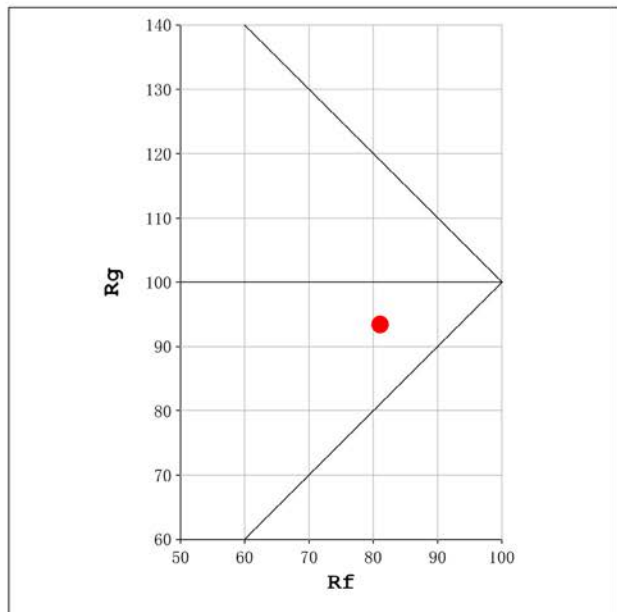
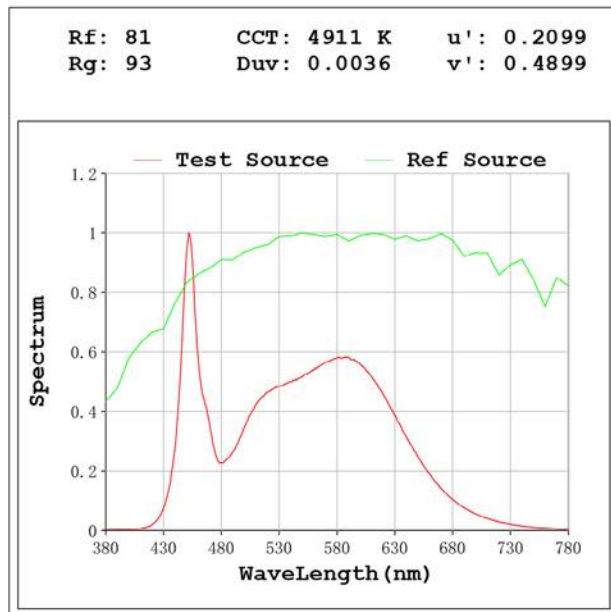
Electrical parameters:

V = 47.998 V I = 0.2489 A P = 11.95 W PF = 1.000

Status: Integral T = 975 ms Ip = 50016 (76%)

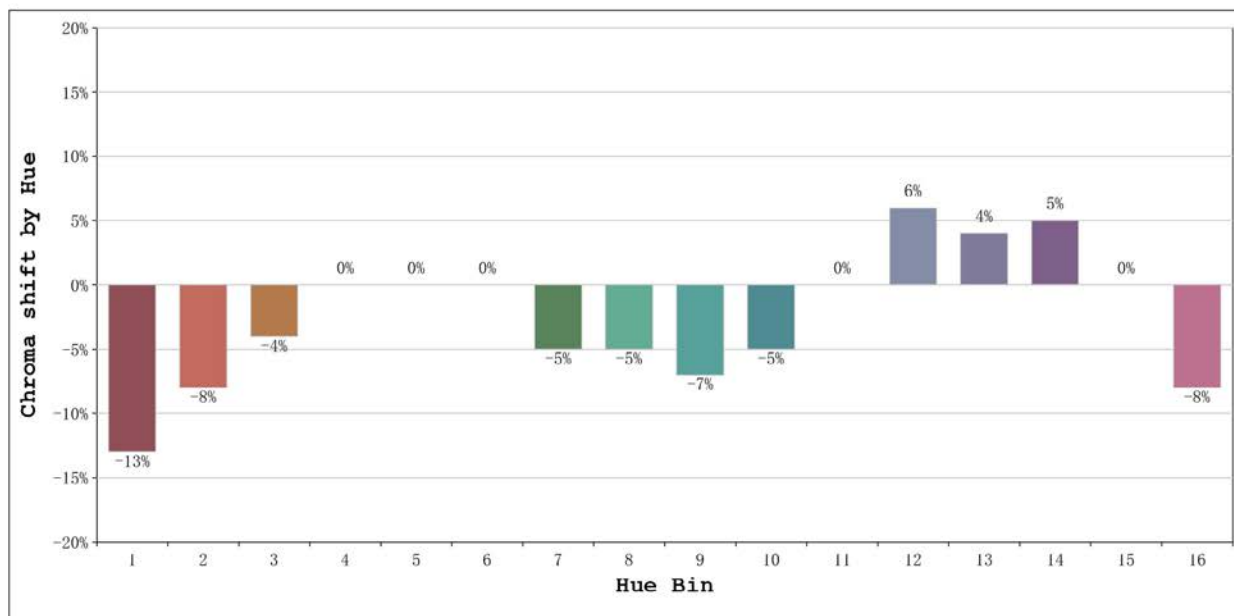
Model:Castellón IP67 5000K
 Tester:Sergio Carneros
 Temperature:27Deg
 Manufacturer:Luz Negra S.L

Number: 33.213
 Date:2024-12-17 15:49:03
 Humidity:40%
 Remarks:100cm de tira flexible



Model:Castellón IP67 5000K
 Tester:Sergio Carneros
 Temperature:27Deg
 Manufacturer:Luz Negra S.L

Number: 33.213
 Date:2024-12-17 15:49:03
 Humidity:40%
 Remarks:100cm de tira flexible



			Graphic shift(%)	
Hue Bin	Hue Angle	Rf	Chroma	Hue
1	0.0° - 22.5°	73	-13	0
2	22.5° - 45.0°	79	-8	6
3	45.0° - 67.5°	74	-4	11
4	67.5° - 90.0°	87	0	6
5	90.0° - 112.5°	90	0	3
6	112.5° - 135.0°	94	0	-1
7	135.0° - 157.5°	86	-5	-4
8	157.5° - 180.0°	89	-5	0
9	180.0° - 202.5°	84	-7	5
10	202.5° - 225.0°	74	-5	13
11	225.0° - 247.5°	75	0	17
12	247.5° - 270.0°	83	6	5
13	270.0° - 292.5°	87	4	-5
14	292.5° - 315.0°	77	5	-14
15	315.0° - 337.5°	73	0	-16
16	337.5° - 360.0°	72	-8	-9

Model:Castellón IP67 5000K
Tester:Sergio Carneros
Temperature:27Deg
Manufacturer:Luz Negra S.L

Number: 33.213
Date:2024-12-17 15:49:03
Humidity:40%
Remarks:100cm de tira flexible