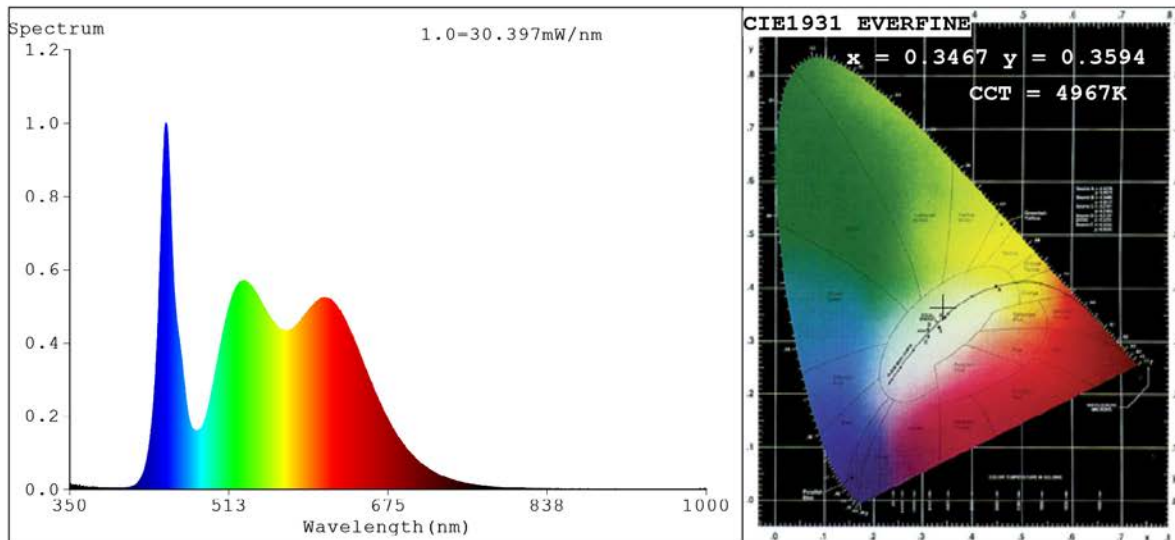


## Spectrum Test Report



### Color Parameters:

Chromaticity Coordinate:  $x=0.3467$   $y=0.3594$   $u'=0.2095$   $v'=0.4886$   
 CCT=4967K (Duv=0.0032) Dominant WL:Ld =570.3nm Purity=11.9%  
 Ratio:R=17.7% G=78.3% B=4.0%;;Peak WL:Lp=448.4nm FWHM=17.1nm  
 Render Index:Ra=91.3 CRI=86.6 TM30:Rf=90 Rg=102  
 R1 =95 R2 =92 R3 =87 R4 =92 R5 =93 R6 =88 R7 =94  
 R8 =90 R9 =65 R10=78 R11=89 R12=63 R13=94 R14=92 R15=92

### Photo Parameters:

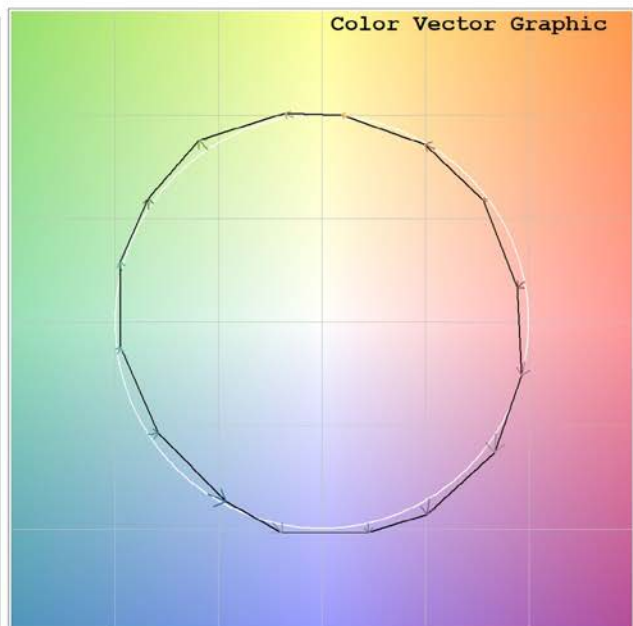
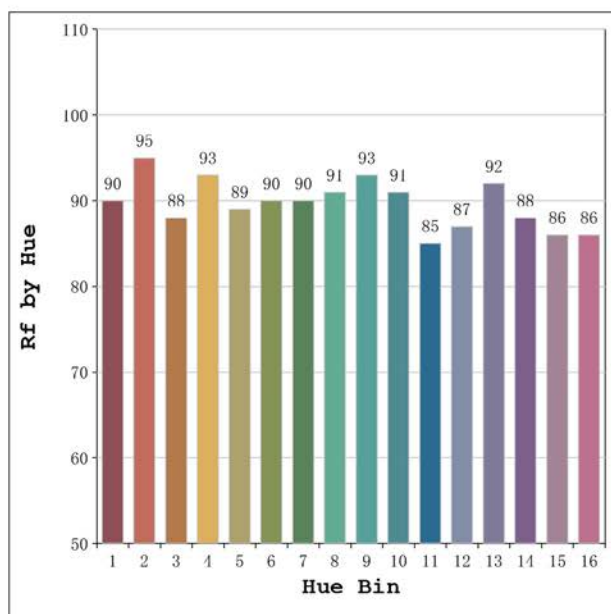
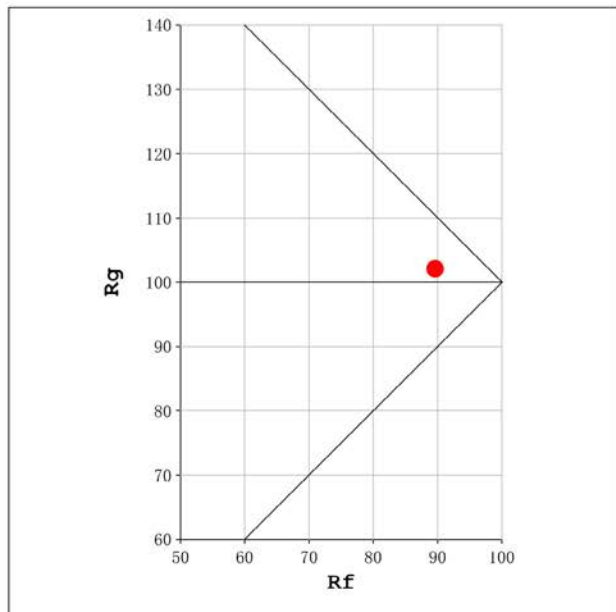
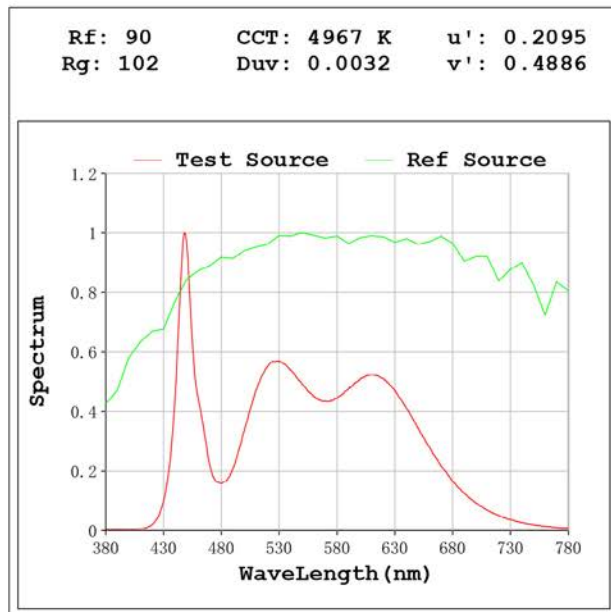
Flux = 1044 lm Eff. : 102.82 lm/W Fe = 3.418 W

### Electrical parameters:

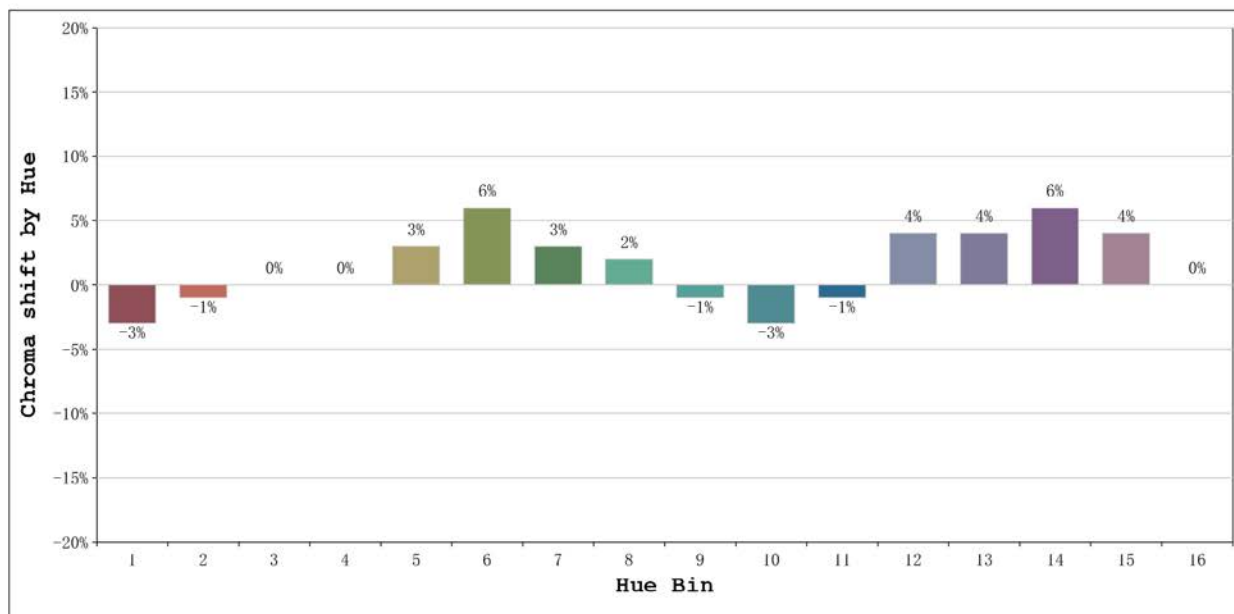
V = 23.998 V I = 0.4233 A P = 10.16 W PF = 1.000

Status: Integral T = 1401 ms Ip = 52646 (80%)

Model:Ecoled Élite Gold Slim 5000	Number: 31.170
Tester:Sergio Carneros	Date:2024-12-17 15:21:25
Temperature:27Deg	Humidity:40%
Manufacturer:Luz Negra S.L	Remarks:100cm de tira flexible



Model:Ecoled Élite Gold Slim 5000	Number: 31.170
Tester:Sergio Carneros	Date:2024-12-17 15:21:25
Temperature:27Deg	Humidity:40%
Manufacturer:Luz Negra S.L	Remarks:100cm de tira flexible



			Graphic shift(%)	
Hue Bin	Hue Angle	Rf	Chroma	Hue
1	0.0° - 22.5°	90	-3	-1
2	22.5° - 45.0°	95	-1	0
3	45.0° - 67.5°	88	0	5
4	67.5° - 90.0°	93	0	3
5	90.0° - 112.5°	89	3	4
6	112.5° - 135.0°	90	6	1
7	135.0° - 157.5°	90	3	-3
8	157.5° - 180.0°	91	2	-3
9	180.0° - 202.5°	93	-1	-2
10	202.5° - 225.0°	91	-3	2
11	225.0° - 247.5°	85	-1	9
12	247.5° - 270.0°	87	4	5
13	270.0° - 292.5°	92	4	0
14	292.5° - 315.0°	88	6	-4
15	315.0° - 337.5°	86	4	-7
16	337.5° - 360.0°	86	0	-6

Model:Ecoled Élite Gold Slim 5000 Number: 31.170  
 Tester:Sergio Carneros Date:2024-12-17 15:21:25  
 Temperature:27Deg Humidity:40%  
 Manufacturer:Luz Negra S.L Remarks:100cm de tira flexible